

TECHNICAL MANUAL

ORGANIZATIONAL MAINTENANCE

REPAIR PARTS AND SPECIAL TOOLS LIST

AIR CONDITIONER, VERTICAL: COMPACT,
SELF-CONTAINED, AIR COOLED,

ELECTRIC MOTOR DRIVEN

115 VOLTS, A.C. 50/60 HERTZ, SINGLE PHASE

9,000 BTU/HR COOLING, 6,000 BTU/HR HEATING

(HARVEY W. HOTTEL MODEL CV-9-5/6-15)

FSN 4120-935-1609

HEADQUARTERS DEPARTMENT OF THE ARMY

30 SEPTEMBER 1974

TECHNICAL MANUAL }
 No. 5-4120-337-20P }

HEADQUARTERS
 DEPARTMENT OF THE ARMY
 WASHINGTON, D. C., 30 September 1974

ORGANIZATIONAL MAINTENANCE REPAIR PARTS
 AND SPECIAL TOOLS LIST

AIR CONIDITIONER, VERTICAL: COMPACT,
 SELF-CONTAINED, AIR COOLIED, ELECTRIC MOTOR DRIVEN
 115 VOLTS, A.C. 50/60 HERTZ, SINGLE PHASE
 9,000 BTU/HR COOLING, 6,000 BTU/HR HEATING
 (HARVEY W. HOTTEL MODEL CV-9-5/6-15)
 FSN 4120-935-1609

Current as of 15 JULY 1974

	Listing Page	Ilus Figure
SECTION I. INTRODUCTION	iii	
II. REPAIR PARTS LIST	1	
Group 01. Casing, Guards, Grilles, Drain Tubea, Panels and Filter	1	1
02. Junction box assembly	5	2
03. Control panel assembly	12	3
04. Block-Off panel assembly.	14	4
05. Fan assembly	14	5
06. Motor assembly	15	6
07. Heater assembly	16	7
08. Wiring harnesses and clamps	16	8
09. Mist Eliminator, Evaporator and Condenser Coils, Valves, Dehydrator, Receiver, Sight Glass and Piping	19	9
10. Valves, pressure switches and piping	21	10
11. High and low pressure switches and enclosure	23	11
12. Compressor assembly	24	12
13. Accessory items	24	13
SECTION III. SPECIALTOOLS LIST (Not applicable)		
IV. FEDERAL STOCK NUMBER AND REFERENCE NUMBER INDEX	25	

Section I. INTRODUCTION

1. Scope

This manual lists repair parts, special tools, test, measurement, diagnostic equipment (TMDE), and other support equipment required for operation and performance of organizational maintenance of the air conditioner.

2. General

NOTE

The Prescribed Load Allowance List is not applicable.

a. Section II — Repair Parts List. A list of repair parts authorized for use in the performance of maintenance. The list also includes parts which must be removed for replacement of the authorized parts. Parts lists are composed of functional groups in ascending numerical sequence, with the parts in each group listed in figure and item number sequence.

b. Section III — Special Tools List. (Not applicable.)

c. Section IV — Federal Stock Number and Reference Number Index. A list, in ascending numerical sequence, of all Federal stock numbers appearing in the listings, followed by a list, in alphanumeric sequence, of all reference numbers appearing in the listings. Federal stock number and part numbers are cross-referenced to each illustration figure and item number appearance.

3. Explanation of Columns

The following provides an explanation of columns found in the tabular listing in Section II.

a. Source, Maintenance, and Recoverability Codes (SMR).

(1) *Source Code.* Source codes are assigned to support items to indicate the manner of acquiring support items for maintenance, repair, or overhaul of end items. Source codes are entered in the first and second positions of the Uniform SMR Code format as follows:

Code

Definition

PA Item procured and stocked for anticipated or known usage.

Code

Definition

PB	Item procured and stocked for insurance purpose because essentiality dictates that a minimum quantity be available in the supply systems.
PC	Item procured and stocked and which otherwise would be coded PA except that it is deteriorative in nature.
PD	Support item, excluding support equipment procured for initial issue or outfitting and stocked only for subsequent or additional initial issues or outfitting. Not subject to automatic replenishment.
PE	support equipment procured and Stocked for initial issue or outfitting to specified maintenance repair activities.
PF	Support equipment which will not be stocked but which will be centrally procured on demand.
PG	Item procured and stocked to provide for sustained support for the life of the equipment. It is applied to an item peculiar to the equipment which, because of probable discontinuance or shutdown of production facilities, would prove uneconomical to reproduce at a later time.
KD	An item of a depot overhaul/repair kit and not purchased separately. Depot kit defined as a kit that provides items required at the time of overhaul or repair.
KF	An item of a maintenance kit and not purchased separately. Maintenance kit defined as a kit that provides an item that can be replaced at organizational or intermediate levels of maintenance.
KB	Item included in both a depot overhaul/repair kit and a maintenance kit.
MO	Item to be manufactured or fabricated at organizational level.
MF	Item to be manufactured or fabricated at the direct support maintenance level.
MH	Item to be manufactured or fabricated at the general support maintenance level.
MD	Item to be manufactured or fabricated at the depot maintenance level.
AO	Item to be assembled at organizational level.
AF	Item to be assembled at direct support maintenance level.
AH	Item to be assembled at general support maintenance level.
AD	Item to be assembled at depot maintenance level.
XA	Item is not procured or stocked because the requirements for the item will result in the replacement of the next higher assembly.
XB	Item is not procured or stocked. If not available through salvage, requisition.

<i>Code</i>	<i>Definition</i>
XD	A support item that is not stocked. When required, item will be procured through normal supply channels.

NOTE

Cannibalization or salvage may be used as a source of supply for any items source coded above except those coded XA or XD.

(2) *Maintenance Code.* Maintenance codes are assigned to indicate the levels of maintenance authorized to use and repair support items. The maintenance codes are entered in the third and fourth positions of the Uniform SMR Code format as follows:

(a) The maintenance code entered in the third position will indicate the lowest maintenance level authorized to remove, replace and use the support item. The maintenance code entered in the thind position will indicate one of the following levels of maintenance:

<i>Code</i>	<i>Application/Explanation</i>
C	Crew or operator maintenance performed within organizational maintenance.
O	Support item is removed, replaced, used at the organizational level.
I	Support item is removed, replaced, used by the direct support element of integrated directt support maintemance.
F	Support item is removed, replaced, used at the direct support level.
H	Support item is removed, replaced, used at the general support level.
D	Support items that are removed, replaced, used at depot, mobile depot, specialized repair activity only.

NOTE

Codes "I" and "F" will be considered the same by direct support units.

(b) The maintenance code entered in the fourth position indicates whether the item is to be repaired and identifies the lowest maintenance level with the capability to perform complete repair (i.e., all authorized maintenance functions). This position will contain one of the following maintenance codes:

<i>Code</i>	<i>Application/Explanation</i>
O	The lowest maintenance level capable of complete repair of the support item is the organizational level.
F	The lowest maintenance level capable of complete repair of the support item is the direct support level.
H	The lowest maintenance level capable of complete repair of the support item is the general support level.<

<i>Code</i>	<i>Application/Explanation</i>
D	The lowest maintenance level capable of complete repair of the support item is the depot level.
L	Repair restricted to designated specialized repair activity.
Z	Nonreparable. No repair is authorized.
B	No repair is authorized. The item may be reconditioned by adjusting, lubricating, etc., at the user level. No parts or special tools are procured for the maintenance of this item.

(3) *Recoverability code.* Recoverability codes are assigned to support items to indicate the disposition action on unserviceable items. The recoverability code is entered in the fifth position of the Uniform SMR Code format as follows:

<i>Recoverability Code</i>	<i>Definition</i>
Z	Nonreparable item. When unserviceable, condemn and dispose at the level indicated in position 3.
O	Reparable item. When uneconomically reparable, condemn and dispose at organizational level.
F	Reparable item. When uneconomically reparable, condemn and dispose at the direct support level.
H	Reparable item. When uneconomically reparable, condemn and dispose at the general support level.
D	Reparable item. When beyond lower level repair capability, return to depot. Condemnation and disposal not authorized below depot level.
L	Reparable item. Repair, condemnation, and disposal not authorized below depot/specialized repair activity Level.
A	Item requires special handling or condemnation procedures because of specific reasons (i.e., precious metal content, high dollar value, critical material or hazardous material). Refer to appropriate manuals/directives for specific instructions.

b. *Federal Stock Number.* Indicates the Federal stock number assigned to the item and will be used for requisitioning purposes.

c. *Description* Indicates the Federal item name and a minimum description required to identify the item. The last line indicates the reference number followed by the applicable Federal Supply Code for Manufacturers (FSCM) in parentheses. The FSCM is used as an element in item identification to designate manufacturer or distributor or Government agency, etc., and is identified in SB 708-42. Items that are included in kits and sets are listed below the name of the kit or set with quantity of each item in the kit or set indicated in front of the item name.

d. *Unit of Measure (U/M).* Indicates the standard or basic quantity by which the listed item is used in performing the actual maintenance function. This measure is expressed by a two-character alphabetical abbreviation, e.g.,

ea, in, pr, etc., and is the basis used to indicate quantities and allowances in subsequent columns.

e. Quantity Incorporated in Unit. Indicates the quantity of the item used in the breakout shown on the illustration figure, which is prepared for a functional group, subfunctional group, or an assembly. A "V" appearing in this column in lieu of a quantity indicates that no specific quantity is applicable (e.g., shims, spacers, etc.).

f. Fifteen-Day Organizational Maintenance Allowances.

(1) The allowance columns are divided into four subcolumns. Indicated in each subcolumn is the total quantity of items authorized for the number of equipments supported.

(2) Items authorized for use as required but not for initial stockage are identified with an asterisk in the allowance column.

g. Illustration. This column is divided as follows:

(1) *Figure Number.* Indicates the figure number of the illustration in which the item is shown.

(2) *Item Number.* Indicates the callout number used to reference the item on the illustration.

4. Special Information

The illustrations in this manual are identical to those published in TM 5-4120-337-34P. Only those parts assigned the third position SMR maintenance code "C" or "O" are listed in the tabular listing; therefore, there may be a break in the item number sequence. Only illustrations containing organizational authorized items appear in this manual.

5. How to Locate Repair Parts

a. When Federal stock number or reference number is unknown:

(1) *First.* Using the table of contents, determine the functional group within which the repair part belongs. This is necessary since illustrations are prepared for functional groups, and listings are divided into the same groups.

(2) *Second.* Find the illustration covering the functional group to which the repair part belongs.

(3) *Third.* Identify the repair part on the illustration and note the illustration figure and item number of the repair part.

(4) *Fourth.* Using the Repair Parts Listing, find the figure and item number noted on the illustration.

b. When Federal Stock number of reference number is known:

(1) *First.* Using the Index of Federal Stock Numbers and Part Numbers, find the pertinent Federal stock number or reference number. This index is in ascending FSN sequence followed by a list of part numbers in ascending alphanumeric sequence, cross-referenced to the illustration figure number and item number.

(2) *Second.* After finding the figure and item number, locate the figure and item number in the repair parts list.

6. Abbreviations

alt	-----	alternate
assy	-----	assembly
brkt	-----	bracket
CBR	-----	Chemical, Biological, Radio- logical
cond	-----	condenser
dia	-----	diameter
ea	-----	each
encl	-----	enclosure
evap	-----	evaporator
ft	-----	foot
HI-LO	-----	high-low
id	-----	inside diameter
in	-----	inch
lg	-----	long
mtg	-----	mounting
mtr	-----	motor
No.	-----	number
nom	-----	nominal
o d	-----	outside diameter
reqd	-----	required
RFI	-----	radio frequency interference
rl	-----	roll
thd	-----	thread
thk	-----	thick

7. Recommendations for Maintenance Publications Improvements

You can improve this manual by calling attention to errors and by recommending improvements, using DA Form 2028 (Recommended Changes to Publications) or by a letter, and mailing directly to Commander, U. S. Army Troop Support Command, ATTN: AMSTS-MPP, 4300 Goodfellow Boulevard, St. Louis, Missouri 63120. A reply will be furnished directly to you.

TMS-4120-337-20/P			(4)	(5)	(6)				(7)	
(1)	(2)	(3)	UNIT	QTY	15-DAY ORGANIZATIONAL				ILLUS-	
SMR	FEDERAL	DESCRIPTION	OF	INC	MAINTENANCE ALW				TRATION	
CODE	STOCK		MEAS	IN	(a)	(b)	(c)	(d)	(a)	(b)
	NUMBER	REF. NUMBER & MFR CODE	ON	UNIT	35435	35601	21-50	51-100	FIG.	ITEM
			CODE						NO.	NO.
SECTION II - REPAIR PARTS LIST										
GROUP 01 - CASING, GUARDS, GRILLES, DRAIN TUBES, PANELS AND FILTER										
PAOZZ	5305-984-6195	SCREW, MACHINE: GRILLE MTG, NO. 8-32 THD SIZE, 3/4 IN. LG MS35206-247 (96906)	EA	4	*	*	*	*	1	1
PAOZZ	5310-045-3299	WASHER, LOCK: GRILLE MTG, NO. 8 NOMINAL MS35338-42 (96906)	EA	4	*	*	*	*	1	2
PAOZZ	5310-821-2366	WASHER, FLAT: GRILLE MTG 13214E3469 (97403)	EA	4	*	*	*	*	1	3
XBOOO		GRILLE: DISCHARGE 13214E3704-1 (97403)	EA	1					1	4
MBOZZ		GASKET: DISCHARGE GRILLE MANUFACTURE FROM:	EA	V					1	5
		RUBBER STRIP, AS REQUIRED ASTMD1056SBE42CF2 (81346)	EA							
PAOZZ	5305-984-6195	SCREW, MACHINE: GRILLE MTG, NO. 8-32 THD SIZE, 3/4 IN. LG MS35206-247 (96906)	EA	4	*	*	*	*	1	6
PAOZZ	5310-045-3299	WASHER, LOCK: GRILLE MTG, NO. 8 NOMINAL MS35338-42 (96906)	EA	4	*	*	*	*	1	7
PAOZZ	5310-821-2366	WASHER, FLAT: GRILLE MTG 13214E3469 (97403)	EA	4	*	*	*	*	1	8
XBOOO		GRILLE: INTAKE 13214E706-1 (97403)	EA	1					1	9
MBOZZ		GASKET: INTAKE GRILLE MANUFACTURE FROM:	EA	V					1	10
		RUBBER STRIP, AS REQUIRED ASTMD1056SBE42CF2 (81346)	EA							
PAOZZ		RIVER, SOLID: PLATE MTG, 1/8 IN. DIA 11/32 IN. LG MS20426AD4-5-5 (96906)	EA	2	*	*	*	*	1	11
XBOZZ		PLATE, INFORMATION: DAMPER OPERATION 13217E2344 (97403)	EA	1					1	12
PAOZZ	5320-882-8388	RIVET, BLIND: HANDLE MTG AD43H (07707)	EA	28	*	*	*	*	1	13
XBOOO		HANDLE H561L5-2RG (98003)	EA	2					1	14
PAOZZ	4130-901-0323	FILTER, AIR 909018 (82866)	EA	1	*	*	*	*	1	15
PAOZZ	5310-081-8087	NUT, SELF-LOCKING: COVER MTG, NO. 6-32 THD SIZE MS21044N06 (96906)	EA	4	*	*	*	*	1	16
PAOZZ	5305-984-4992	SCREW, MACHINE: COVER MTG, NO. 6-32 THD SIZE, 3/4 IN. LG MS35206-232 (96906)	EA	4	*	*	*	*	1	17
XBOZZ		COVER; ALTERNATOR ELECTRICAL RECEPTACLE MTG 13214E3471-2 (97403)	EA	1					1	18
PAOZZ	5310-088-0551	NUT, SELF-LOCKING: COVER MTG, NO. 4-40 THD SIZE MS21044N04 (96906)	EA	4	*	*	*	*	1	19

TM5-4120-337-20/P										
(1)	(2)	(3)	(4)	(5)	(6)				(7)	
SMR	FEDERAL STOCK	DESCRIPTION	UNIT OF MEAS	QTY INC	15-DAY ORGANIZATIONAL MAINTENANCE ALW				ILLUS-TRATION	
CODE	NUMBER		USABLE ON CODE	IN UNIT	(a)	(b)	(c)	(d)	(a)	(b)
		REF NUMBER & MFR CODE			1-5	6-20	21-50	51-100	NO.	ITEM NO.
PAOZZ	5305-889-2999	SCREW, MACHINE: COVER MTG, NO. 4-40 THD SIZE, 1/2 IN. LG MS35206-217 (96906)	EA	4	*	*	*	*	1	20
XBOZZ		COVER: ALTERNATOR ELECTRICAL RECEPTACLE MTG 13214E3471-1 (97403)	EA	1					1	21
XBOZZ		PENDANT 13211E8305 (97403)	EA	1					1	22
XBOZZ		SPRING MS24586C48 (96906)	EA	1					1	23
PAOZZ	5320-932-1972	RIVET, BLIND: CHAIN ASSEMBLY MTG AD42H (07707)	EA	1	*	*	*	*	1	24
XBOZZ		CHAIN ASSEMBLY 13211E8322 (97403)	EA	1					1	25
XBOOO		PANEL, LOWER 13218E9949-2 (97403)	EA	1					1	26
PAOZZ	5310-880-9344	WASHER, RETAINING: LOWER PANEL MOUNTING 12-11014-12 (94222)	EA	2	*	*	*	*	1	27
PAOZZ		SCREW, PANEL FASTENER: LOWER PANEL MTG 12-11-713-11 (94222)	EA	2	*	*	*	*	1	28
MBOZZ		GASKET: LOWER PANEL MANUFACTURE FROM:	EA	V					1	29
		RUBBER STRIP, AS REQUIRED ASTMD1056SBE42CF2 (81346)	EA							
PAOZZ	5320-932-1972	RIVET, BLIND: INFORMATION PLATE MTG AD42H (07707)	EA	6	*	*	*	*	1	30
XBOOO		PLATE, INFORMATION: SCHEMATIC, REFRIGERATION 13218E7079-2 (97403)	EA	1					1	31
PAOZZ	5320-874-4471	RIVET, BLIND: INFORMATION PLATE MTG AD45H (07707)	EA	6	*	*	*	*	1	32
MBOZZ		SPACER: INFORMATION PLATE MTG MANUFACTURE FROM:	EA	V					1	33
		ALUMINUM TUBE, AS REQUIRED AA6061T5 (80204)	EA							
XBOOO		PLATE, INFORMATION: WIRING DIAGRAM 13218E9884 (97403)	EA	1					1	34
MBOZZ		INSULATION: LOWER PANEL, 1/4 IN. THICK MANUFACTURE FROM:	EA	V					1	35
		PLASTIC SHEET, AS REQUIRED MILI14511 (81349)	EA							
MBOZZ		INSULATION: LOWER PANEL, 1/2 IN. THICK MANUFACTURE FROM:	EA	V					1	36
		PLASTIC SHEET, AS REQUIRED MILI14511 (81349)	EA							
PAOZZ	5315-234-1856	PIN, COTTER MS24665-155 (96906)	EA	2	*	*	*	*	1	37
XBOZZ		SPRING 13211E8412 (97403)	EA	2					1	38
XBOZZ		BALL 132111E8411 (97403)	EA	2					1	39

TM5-4120-337-20/P										
(1)	(2)	(3)	(4)	(5)	(6)				(7)	
SMR	FEDERAL STOCK	DESCRIPTION	UNIT OF MEAS	QTY INC	15-DAY ORGANIZATIONAL MAINTENANCE ALW				ILLUS-TRATION	
CODE	NUMBER		USABLE ON CODE	IN UNIT	(a)	(b)	(c)	(d)	(a)	(b)
		REF NUMBER & MFR CODE			1-5	6-20	21-50	51-100	FIG. NO.	ITEM NO.
PAOZZ	4730-908-3194	CLAMP, HOSE MS35842-11 (96906)	EA	4	*	*	*	*	1	40
PAOZZ	5310-060-2039	NUT, SELF-LOCKING: DRAIN TUBE MTG, NO. 8-32 THD SIZE MS21044D08 (96906)	EA	1	*	*	*	*	1	41
PAOZZ	5340-106-0551	CLAMP, LOOP: DRAIN TUBE MTG, 5/8 IN. NOMINAL SIZE MS21104D10 (96906)	EA	1	*	*	*	*	1	42
PAOZZ	5305-984-6194	SCREW, MACHINE: DRAIN TUBE MTG, NO. 8-32 THD SIZE, 5/8 IN. LG MS35206-246 (96906)	EA	1	*	*	*	*	1	43
XBOZZ		TUBE, DRAIN: LEFT SIDE R661-72C108 (97450)	EA	1					1	44
PAOZZ	5310-060-2039	NUT, SELF-LOCKING: DRAIN TUBE MTG, NO. 8-32 THD SIZE MS21044D08 (96906)	EA	1	*	*	*	*	1	45
PAOZZ	5340-106-0551	CLAMP, LOOP: DRAIN TUBE MTG, 5/8 IN. NOMINAL SIZE MS21104D10 (96906)	EA	1	*	*	*	*	1	46
PAOZZ	5305-063-3503	SCREW, MACHINE: DRAIN TUBE MTG, NO. 8-32 THD SIZE, 1/2 IN. LG MS24693S50 (96906)	EA	1	*	*	*	*	1	47
XBOZZ		TUBE, DRAIN: RIGHT SIDE 13214E3484 (97403)	EA	1					1	48
XBOZZ		HOSE, DRAIN 13211E8323 (97403)	EA	2					1	49
XBOZZ		COVER: CIRCUIT BREAKER ACCESS 13218E7076 (97403)	EA	1					1	50
PAOZZ	5310-530-9963	WASHER, RETAINING 5S3-1 (71286)	EA	2	*	*	*	*	1	51
PAOZZ	5325-954-3832	STUD, TURNLOCK FASTENER: COVER MOUNTING 12S1-14-1AA (71286)	EA	2	*	*	*	*	1	52
MBOZZ		GASKET: COVER MANUFACTURE FROM: RUBBER SHEET, AS REQUIRED ASTMD1056SBE42CF2 (81346)	EA	V					1	53
PAOZZ	5320-932-1972	RIVET, BLIND: INFORMATION PLATE MOUNTING AD42H (07707)	EA	2	*	*	*	*	1	54
XBOZZ		PLATE, INFORMATION: CIRCUIT BREAKER 13218E7077 (97403)	EA	1					1	55
PAOZZ	5310-088-0551	NUT, SELF-LOCKING: COVER MTG, NO. 4-40 THD SIZE MS21044N04 (96906)	EA	8	*	*	*	*	1	56
PAOZZ	5305-889-2999	SCREW, MACHINE: COVER MTG, NO. 4-40 THD SIZE, 1/2 IN. LG MS35206-217 (96906)	EA	8	*	*	*	*	1	57
XBOZZ		COVER, ALTERNATOR ELECTRICAL RECEPTACLE MTG 13214E3471-1 (97403)	EA	2					1	58
PAOZZ	5320-932-1972	RIVET, BLIND: IDENTIFICATION PLATE MTG AD42H (07707)	EA	4	*	*	*	*	1	59
XBOOO		PLATE, IDENTIFICATION R661-72C112 (97450)	EA	1					1	60

TM5-4120-337-20/P		(3)	(4)	(5)	(6)	ORGANIZATIONAL				(7)	
(1)	(2)	DESCRIPTION	UNIT OF MEAS	QTY INC	15-DAY MAINTENANCE	(a)	(b)	(c)	(d)	ILLUS-TRATION	(b)
SMR CODE	FEDERAL STOCK NUMBER	REF. NUMBER & MFR	USABLE ON CODE	IN UNIT	IN					FIG. NO.	ITEM NO.
PAOZZ	5305-984-6194	SCREW, MACHINE: TOP PANEL MTG, NO. 8-32 THD SIZE, 5/8 IN. LG MS35206-246 (96906)	EA	20	*	*	*	*	*	1	61
PAOZZ		WASHER ASSEMBLY: TOP PANEL MTG R655-71C110 (97450)	EA	20	*	*	*	*	*	1	62
XBOOO		PANEL, TOP 13214E3384 (97403)	EA	1						1	63
MBOZZ		INSULATION: TOP PANEL, 1/4 IN. THICK MANUFACTURE FROM:	EA	V						1	64
		PLASTIC SHEET, AS REQUIRED MILI14511 (81349)	EA								
MBOZZ		GASKET: TOP PANEL MANUFACTURE FROM:	EA	V						1	65
		RUBBER SHEET, AS REQUIRED ASTMD1056SBE42CF2 (81346)	EA								
PAOZZ	5305-984-6195	SCREW, MACHINE: SCREEN MTG, NO. 8-32 THD SIZE, 3/4 IN. LG MS35206-247 (96906)	EA	5	*	*	*	*	*	1	66
PAOZZ	5310-821-2366	WASHER, FLAT: SCREEN MTG 13214E3469 (97403)	EA	5	*	*	*	*	*	1	67
PAOZZ	5310-045-3299	WASHER, LOCK: SCREEN MTG MS35338-42 (96906)	EA	5	*	*	*	*	*	1	68
XBOZZ		SCREEN, FRESH AIR 13214E3616 (97403)	EA	1						1	69
PAOZZ	5305-984-6197	SCREW, MACHINE: DUCT COVER MTG, NO. 8-32 THD SIZE, 1 IN. LG MS35206-249 (96906)	EA	5	*	*	*	*	*	1	70
PAOZZ	5310-821-2366	WASHER, FLAT: DUCT COVER MTG 13214E3469 (97403)	EA	5	*	*	*	*	*	1	71
PAOZZ	5310-045-3299	WASHER, LOCK: DUCT COVER MTG MS35338-42 (96906)	EA	5	*	*	*	*	*	1	72
XBOZZ		COVER: CBR DUCT 13214E3615 (97403)	EA	1						1	73
MBOZZ		GASKET: COVER MANUFACTURE FROM:	EA	V						1	74
		RUBBER SHEET, AS REQUIRED ASTMD1056SBE42CF2 (81346)	EA								
PAOZZ	5320-932-1972	RIVET, BLIND: INFORMATION PLATE MTG AD42H (07707)	EA	2	*	*	*	*	*	1	75
XBOZZ		PLATE, INFORMATION: CIRCUIT BREAKER RESET 13217E6814 (97403)	EA	1						1	76
PAOZZ	5305-984-6194	SCREW, MACHINE: ACCESS COVER MTG, NO. 8-32 THD SIZE, 5/8 IN. LG MS35206-246 (96906)	EA	2	*	*	*	*	*	1	77
XBOZZ		COVER, ACCESS 13218E7489 (97403)	EA	1						1	78
PAOZZ	5320-932-1972	RIVET, BLIND: INFORMATION PLATE MTG AD42H (07707)	EA	4	*	*	*	*	*	1	79
XBOZZ		PLATE, INSTRUCTION: REFRIGERANT CHARGE 13214E3662 (97403)	EA	1						1	80
MBOZZ		GASKET: ACCESS COVER MANUFACTURE FROM:	EA	V						1	81
		RUBBER SHEET, AS REQUIRED ASTMD1056SBE42CF2 (81346)	EA								

TM5-4120-337-20/P										
(1)	(2)	(3)	(4)	(5)	(6)				(7)	
SMR	FEDERAL	DESCRIPTION	UNIT	QTY	15-DAY ORGANIZATIONAL				ILLUS-	
CODE	STOCK		OF	INC	MAINTENANCE ALW				TRATION	
	NUMBER		MEAS	IN	(a)	(b)	(c)	(d)	(a)	(b)
		REF NUMBER & MFR CODE	ON	UNIT	1-5	6-20	21-50	51-100	FIG.	ITEM
			CODE						NO.	NO.
PAOZZ	5320-932-1972	RIVET, BLIND: INFORMATION PLATE MTG AD42H (07707)	EA	2	*	*	*	*	1	82
XBOOO		PLATE, INFORMATION: SUCTION SERVICE 13218E7074 (97403)	EA	1					1	83
PAOZZ	5320-932-1972	RIVET, BLIND: INFORMATION PLATE MTG AD42H (07707)	EA	2	*	*	*	*	1	84
XBOOO		PLATE, INFORMATION: DISCHARGE SERVICE 13218E7075 (97403)	EA	1					1	85
PAOZZ	5320-932-1972	RIVET, BLIND: INSTRUCTION PLATE MTG AD42H (07707)	EA	2	*	*	*	*	1	86
XBOOO		PLATE, INFORMATION: FAN ROTATION 13218E7078 (97403)	EA	1					1	87
PAOZZ	5320-932-1972	RIVET, BLIND: INSTRUCTION PLATE MTG AD42H (07707)	EA	2	*	*	*	*	1	88
XBOOO		PLATE, MOSITURE INDICATION 13211E8215 (97403)	EA	1					1	89
PAOZZ	5305-993-1849	SCREW, MACHINE: CONDENSER COIL GUARD MTG, NO. 10-32 THD SIZE, 3/4 IN. LG MS35207-265 (96906)	EA	6	*	*	*	*	1	90
PAOZZ	5310-821-2366	WASHER, FLAT: CONDENSER COIL GUARD MTG 13214E3469 (97403)	EA	6	*	*	*	*	1	91
XBOOO		GUARD, CONDENSER COIL 13214E3533 (97403)	EA	1					1	92
PAOZZ	5305-984-6195	SCREW, MACHINE: FAN GUARD MTG, NO. 8-32 THD SIZE, 3/4 IN. LG MS35206-247 (96906)	EA	8	*	*	*	*	1	93
PAOZZ	5310-821-2366	WASHER, FLAT: FAN GUARD MTG 13214E3469 (97403)	EA	8	*	*	*	*	1	94
PAOZZ	5310-045-3299	WASHER, LOCK: FAN GUARD MTG MS35338-42 (96906)	EA	8	*	*	*	*	1	95
XBOOO		GUARD, FAN 13214E3612 (97403)	EA	1					1	96
XBOOO		BRACKET, SUPPORT 13214E3622 (97403)	EA	1					1	97
PAOZZ	5305-068-0505	SCREW, MACHINE: CASING ATTACHMENT, 1/4-28 THD SIZE, 5/8 IN. LG MS90726-5 (96906)	EA	8	*	*	*	*	1	98
PAOZZ	5310-809-4058	WASHER, FLAT: CASING ATTACHMENT MS27183-10 (96906)	EA	8	*	*	*	*	1	99
MBOZZ		GASKET: BOTTOM PANEL MANUFACTURE FROM:	EA	V					1	102
		RUBBER STRIP, AS REQUIRED ASTMD1056SBE42CF2 (81346)	EA							
PAOZZ	4730-079-9399	PLUG, PIPE: DRAIN CONNECTION 13211E8178 (97403)	EA	4	*	*	*	*	1	103
		GROUP 02 JUNCTION BOX ASSEMBLY								
XBOOO		JUNCTION BOX ASSEMBLY 13218E9887-2 (97403)	EA	1					2	

TM5-4120-337-20/P											
(1)	(2)	(3)	(4)	(5)	(6)				(7)		
SMR	FEDERAL	DESCRIPTION	UNIT	QTY	15-DAY ORGANIZATIONAL				ILLUS-		
CODE	STOCK		OF	INC	MAINTENANCE ALW				TRATION		
	NUMBER		MEAS	IN	(a)	(b)	(c)	(d)	(a)	(b)	
		REF NUMBER & MFR CODE	USABLE	UNIT	1-5	6-20	21-50	51-100	FIG.	ITEM	
			ON						NO.	NO.	
			CODE								
XBOOO		COVER: JUNCTION BOX 13214E3412 (97403)		EA	1					2	1
PAOZZ	5310-880-9344	WASHER, RETAINING: COVER MTG 12-11014-12 (94222)		EA	4	*	*	*	*	2	2
PAOZZ	5305-356-6102	SCREW, PANEL FASTENER: COVER MOUNTING 12-11-303-11 (94222)		EA	4	*	*	*	*	2	3
MBOZZ		GASKET: JUNCTION BOX COVER MANUFACTURE FROM:		EA	V					2	4
		RUBBER STRIP, AS REQUIRED ASTMD1056SBE42CF2 (81346)		EA							
PAOZZ	5310-275-6813	NUT, SHEET SPRING: JUNCTION BOX COVER MTG C13853-1420 (78553)		EA	4	*	*	*	*	2	5
PBOZZ	5355-171-2442	KNOB: CIRCUIT BREAKER RESET B43310-1 (41625)		EA	1	*	*	*	*	2	6
PAOZZ	5310-596-7691	WASHER, LOCK: CIRCUIT BREAKER RESET MS35335-32 (96906)		EA	1	*	*	*	*	2	7
XBOZZ		END FITTING, CORE: CIRCUIT BREAKER RESET A37693 (41625)		EA	1					2	8
XBOZZ		CONTROL ASSEMBLY, PUSH-PULL B48701X22-00 (41625)		EA	1					2	9
PAOZZ	5305-984-4983	SCREW, MACHINE: CIRCUIT BREAKER MTG, NO. 6-32 THD SIZE, 1/4 IN. LG. MS35206-226 (96906)		EA	4	*	*	*	*	2	10
PAOZZ	5310-790-0079	WASHER, LOCK: CIRCUIT BREAKER MTG MS35333-37 (96906)		EA	6	*	*	*	*	2	11
PAOZZ	5305-984-4988	SCREW, MACHINE: COVER MTG, NO. 8-32 THD SIZE, 3/8 IN. LG MS35206-228 (96906)		EA	2	*	*	*	*	2	12
XBOZZ		COVER: CIRCUIT BREAKER OPENING 13215E9828 (97403)		EA	1					2	13
XBOZZ		COVER: CIRCUIT BREAKER 006-10245 (74193)		EA	1					2	14
PAOZZ		CIRCUIT BREAKER APGH11R1799-5 (81541)		EA	1	*	*	*	*	2	15
PAOZZ		NUT, SELF-LOCKING: NO. 10-32 THD SIZE MS21083N3 (96906)		EA	2	*	*	*	*	2	16
XBOZZ		PLATE, ACTUATOR: CIRCUIT BREAKER RESET R655-71C143 (97450)		EA	1					2	17
XBOZZ		ARM ACTUATOR: CIRCUIT BREAKER RESET R655-71C142-2 (97450)		EA	1					2	18
PAOZZ	5305-984-6196	SCREW, MACHINE: CLAMP MTG, NO. 8-32 THD SIZE, 7/8 IN. LG MS35206-248 (96906)		EA	2	*	*	*	*	2	19
PAOZZ	5340-247-6226	CLAMP, LOOP: CIRCUIT BREAKER RESET MS21104D3 (96906)		EA	2	*	*	*	*	2	20
XBOZZ		SPACER: CLAMP MTG 13211E8376-5 (97403)		EA	2					2	21
PAOZZ	5310-877-5797	NUT, SELF-LOCKING: GROUND LUG MTG, NO. 10-32 THD SIZE MS21044N3 (96906)		EA	1	*	*	*	*	2	22

TM5-4120-337-20/P			(4)	(5)	(6)				(7)	
(1)	(2)	(3)	UNIT	QTY	15-DAY ORGANIZATIONAL				ILLUS-	
SMR	FEDERAL	DESCRIPTION	OF	INC	MAINTENANCE ALW				TRATION	
CODE	STOCK		MEAS	IN	(a)	(b)	(c)	(d)	(a)	(b)
	NUMBER	REF. NUMBER & MFR CODE	ON	UNIT	1-5	6-20	21-50	51-100	FIG.	ITEM
			USABLE						NO.	NO.
			CODE							
PAOZZ	5305-995-3444	SCREW, MACHINE: GROUND LUG MTG, NO. 10-32 THD SIZE, 7/8 IN. LG MS35207-266 (96906)	EA	1	*	*	*	*	2	23
PAOZZ	5310-014-5850	WASHER, FLAT: GROUND LUG MTG MS27183-42 (96906)	EA	2	*	*	*	*	2	24
PAOZZ	5310-045-3296	WASHER, LOCK: GROUND LUG MTG MS35338-43 (96906)	EA	1	*	*	*	*	2	25
MFOFF		LEAD, ELECTRICAL MANUFACTURE FROM:	EA	1					2	26
		WIRE, ELECTRICAL AS REQUIRED M5086-2-10-9 (81349)	EA							
		TERMINAL LUG, 1 EA MS25036-112 (96906)	EA							
		TERMINAL LUG, 1 EA MS25036-157 (96906)	EA							
PAOZZ	5310-880-9344	WASHER, RETAINING: JUNCTION BOX MOUNTING 12-11014-12 (94222)	EA	4	*	*	*	*	2	27
PAOZZ	5305-621-5305	SCREW, PANEL FASTENER: JUNCTION BOX MTG 12-11-203-11 (94222)	EA	4	*	*	*	*	2	28
PAOZZ	5950-111-4720	TRANSFORMER, STEPDOWN: 115 VOLTS TO 30 VOLTS 41100 (73386)	EA	1	*	*	*	1	2	29
MBOZZ		CAPACITOR ASSEMBLY: RFI R655-71C118 (97450) MANUFACTURE FROM:	EA	1					2	30
		CAPACITOR, 1 EA R655-71C117 (97450)	EA							
		TERMINAL LUG, 2 EA MS25036-101 (96906)	EA							
		INSULATION SLEEVING, AS REQUIRED MILI23053-2CL1 (81349)	EA							
MFOFF		LEAD, ELECTRICAL MANUFACTURE FROM:	EA	2					2	31
		WIRE, ELECTRICAL, AS REQUIRED M5086-1-16-9 (81349)	EA							
		TERMINAL LUG, 1 EA MS25036-106 (96906)	EA							
		TERMINAL LUG, 1 EA 13216E6191-2 (97403)	EA							
XBOZZ		GASKET: TRANSFORMER MTG 13214E3685-2 (97403)	EA	1					2	32
MBOZZ		GASKET: CONTROL BOX MTG MANUFACTURE FROM:	EA	1					2	33
		RUBBER SHEET, AS REQUIRED ASTMD1056SBE42CF2 (81346)	EA							
PAOZZ	5305-984-6193	SCREW, MACHINE: BRACKET MTG, NO. 8-32 THD SIZE, 1/2 IN. LG MS35206-245 (96906)	EA	3	*	*	*	*	2	34
XBOZZ		BRACKET: TIME DELAY MTG 13218E9897 (97403)	EA	1					2	35
MFOFF		LEAD, ELECTRICAL MANUFACTURE FROM:	EA	2					2	36
		WIRE, ELECTRICAL, AS REQUIRED M5086-1-16-9 (81349)	EA							

TM5-4120-337-20/P										
(1)	(2)	(3)	(4)	(5)	(6)				(7)	
SMR	FEDERAL STOCK	DESCRIPTION	UNIT OF MEAS	QTY INC	15-DAY ORGANIZATIONAL MAINTENANCE ALW				ILLUS-TRATION	
CODE	NUMBER		USABLE ON CODE	IN	(a)	(b)	(c)	(d)	(a)	(b)
		REF NUMBER & MFR CODE		UNIT	1-5	6-20	21-50	51-100	FIG. NO.	ITEM NO.
MFOFF		LEAD, ELECTRICAL MANUFACTURE FROM:	EA	5					2	37
		WIRE, ELECTRICAL, AS REQUIRED M5086-1-16-9 (81349)	EA							
		TERMINAL LUG, 1 EA MS25036-153 (96906)	EA							
MBOZZ		INSULATION SLEEVING: MANUFACTURE FROM:	EA	V					2	38
		TUBING, AS REQUIRED MILI23053-2CL (81349)	EA							
PAOZZ	5310-081-8087	NUT, SELF-LOCKING: TIME DELAY RELAY MTG, NO. 6-32 THD SIZE MS21044N06 (96906)	EA	4	*	*	*	*	2	39
PAOZZ	5305-984-4989	SCREW, MACHINE: TIME DELAY RELAY MTG, NO. 6-32 THD SIZE 7/16 IN. LG MS35206-229 (96906)	EA	4	*	*	*	*	2	40
PAOZZ	5945-007-7669	RELAY, TIME DELAY: COMPRESSOR START, 30 SECOND DELAY 13216E6182-3 (97403)	EA	1	*	*	*	1	2	41
PAOZZ	5945-007-7668	RELAY, TIME DELAY: FAN SPEED, 15 SECOND DELAY 13216E6182-2 (97403)	EA	1	*	*	*	1	2	42
MFOFF		LEAD, ELECTRICAL MANUFACTURE FROM:	EA	1					2	43
		WIRE, ELECTRICAL, AS REQUIRED M5086-1-16-9 (81349)	EA							
		TERMINAL, QUICK DISCONNECT, 1 EA 13216E6192 (97403)	EA							
		TERMINAL LUG, 1 EA MS25036-153 (96906)	EA							
MFOFF		LEAD, ELECTRICAL MANUFACTURE FROM:	EA	2					2	44
		WIRE, ELECTRICAL, AS REQUIRED M5086-1-16-9 (81349)	EA							
		TERMINAL LUG, 1 EA MS25036-153 (96906)	EA							
		TERMINAL LUG, 1 EA MS25036-106 (96906)	EA							
MFOFF		LEAD, ELECTRICAL MANUFACTURE FROM:	EA	2					2	45
		WIRE, ELECTRICAL, AS REQUIRED M5086-1-16-9 (81349)	EA							
		TERMINAL LUG, 1 EA 13216E6191-2 (97403)	EA							
		TERMINAL LUG, 1 EA MS25036-153 (96906)	EA							
MFOFF		LEAD, ELECTRICAL MANUFACTURE FROM:	EA	1					2	46
		WIRE, ELECTRICAL, AS REQUIRED M5086-1-16-9 (81349)	EA							
		TERMINAL LUG, 1 EA MS25036-106 (96906)	EA							

TM5-4120-337-20/P											
(1)	(2)	(3)	(4)	(5)	(6)					(7)	
SMR	FEDERAL	DESCRIPTION	UNIT	QTY	15-DAY	ORGANIZATIONAL			ILLUS-		
CODE	STOCK		OF	INC	MAINTENANCE	ALW			TRATION	(a)	(b)
	NUMBER		USABLE	IN	(a)	(b)	(c)	(d)	FIG.	ITEM	
		REF. NUMBER & MFR CODE	ON	UNIT	1-5	6-20	21-50	51-100	NO.	NO.	
			CODE								
MFOFF		LEAD, ELECTRICAL MANUFACTURE FROM:	EA	1					2	47	
		WIRE, ELECTRICAL, AS REQUIRED M5086-1-14-9 (81349)	EA								
		TERMINAL LUG, 1 EA 13216E6191-2 (97403)	EA								
		TERMINAL LUG, 1 EA MS25036-108 (96906)	EA								
MFOFF		LEAD, ELECTRICAL MANUFACTURE FROM:	EA	3					2	48	
		WIRE, ELECTRICAL, AS REQUIRED M5086-1-16-9 (81349)	EA								
		TERMINAL LUG, 1 EA MS25036-108 (96906)	EA								
		TERMINAL LUG, 1 EA MS25036-153 (96906)	EA								
MFOFF		LEAD, ELECTRICAL MANUFACTURE FROM:	EA	3					2	49	
		WIRE, ELECTRICAL, AS REQUIRED M5086-1-16-9 (81349)	EA								
		TERMINAL LUG, 2 EA MS25036-153 (96906)	EA								
MFOFF		LEAD, ELECTRICAL MANUFACTURE FROM:	EA	2					2	50	
		WIRE, ELECTRICAL, AS REQUIRED M5086-1-12-9 (81349)	EA								
		TERMINAL LUG, 1 EA 13216E6191-3 (97403)	EA								
		TERMINAL LUG, 1 EA MS25036-156 (96906)	EA								
MFOFF		LEAD, ELECTRICAL MANUFACTURE FROM:	EA	1					2	51	
		WIRE, ELECTRICAL, AS REQUIRED M5086-1-14-9 (81349)	EA								
		TERMINAL LUG, 1 EA 13216E6191-2 (97403)	EA								
		TERMINAL LUG, 1 EA MS25036-153 (96906)	EA								
MFOFF		LEAD, ELECTRICAL MANUFACTURE FROM:	EA	1					2	52	
		WIRE, ELECTRICAL, AS REQUIRED M5086-1-15-9 (81349)	EA								
		TERMINAL LUG, 2 EA MS25036-153 (96906)	EA								
PAOZZ	5310-081-8087	NUT, SELF-LOCKING, HARNESS MTG, NO. 6-32 THD SIZE MS21044N06 (96906)	EA	4	*	*	*	*	2	53	
PAOZZ	5305-984-4992	SCREW, MACHINE: HARNESS MTG, NO. 6-32 THD SIZE, 3/4 IN. LG MS35206-232 (96906)	EA	4	*	*	*	*	2	54	
MFOFF	4130-106-5662	WIRING HARNESS: JUNCTION BOX 13214E3724 (97403) MANUFACTURE FROM:	EA	1					2	55	
		CONNECTOR, RECEPTACLE, 1 EA MS3102R28-9S (96906)	EA								

TM5-4120-337-20/P										
(1)	(2)	(3)	(4)	(5)	(6)				(7)	
SMR	FEDERAL	DESCRIPTION	UNIT	QTY	15-DAY ORGANIZATIONAL				ILLUS-	
CODE	STOCK		OF	INC	MAINTENANCE ALW				TRATION	
	NUMBER		MEAS	IN	(a)	(b)	(c)	(d)	(a)	(b)
		REF NUMBER & MFR CODE	ON	UNIT	1-5	6-20	21-50	51-100	FIG.	ITEM
			CODE						NO.	NO.
		WIRE, ELECTRICAL, AS REQUIRED M5086-1-16-9 (81349)		EA						
		WIRE, ELECTRICAL, AS REQUIRED M5086-1-14-9 (81349)		EA						
		TERMINAL LUG, 7 EA MS25036-153 (96906)		EA						
		TERMINAL LUG, 2 EA MS25036-106 (96906)		EA						
		TERMINAL LUG, 1 EA MS25036-108 (96906)		EA						
		INSULATION SLEEVING, AS REQUIRED MILI23053-2CL1 (81349)		EA						
XBOZZ		GASKET, RUBBER: HARNESS MTG MS51007-10 (96906)		EA	1				2	56
PAOZZ	5310-811-3494	NUT, SELF-LOCKING: HARNESS MTG, NO. 8-32 THD SIZE MS21044N08 (96906)		EA	4	*	*	*	2	57
PAOZZ	5305-984-6195	SCREW, MACHINE: HARNESS MTG, NO. 8-32 THD SIZE, 3/4 IN. LG MS35206-247 (96906)		EA	4	*	*	*	2	58
MFOFF		WIRING HARNESS: JUNCTION BOX 13218E9896 (97403) MANUFACTURE FROM:		EA	1				2	59
		CONNECTOR, RECEPTACLE, 1 EA MS3102R32-7P (96906)		EA						
		WIRE, ELECTRICAL, AS REQUIRED M5086-1-16-9 (81349)		EA						
		WIRE, ELECTRICAL, AS REQUIRED M5086-1-12-9 (81349)		EA						
		INSULATION SLEEVING, AS REQUIRED MILI23053-2CL1 (81349)		EA						
		TERMINAL, QUICK DISCONNECT, 1 EA 13216E6192 (97403)		EA						
		TERMINAL LUG, 1 EA MS25036-108 (96906)		EA						
		TERMINAL LUG, 1 EA MS25036-112 (96906)		EA						
		TERMINAL LUG, 2 EA MS25036-156 (96906)		EA						
		TERMINAL LUG, 9 EA MS25036-153 (96906)		EA						
		TERMINAL LUG, 10 EA MS25036-106 (96906)		EA						
XBOZZ		GASKET, RUBBER: HARNESS MTG MS51007-12 (96906)		EA	1				2	60
PAOZZ	5961-106-5259	RECTIFIER, SEMI-CONDUCTOR SS0329 (58849)		EA	1	*	*	*	2	61
PAOZZ	5310-081-8087	NUT, SELF-LOCKING: FUSEHOLDER MTG, NO. 6-32 THD SIZE MS21044N06 (96906)		EA	2	*	*	*	2	62
PAOZZ	5305-059-4553	SCREW, MACHINE: FUSEHOLDER MTG, NO. 6-32 THD SIZE, 1/2 IN. LG MS35190-238 (96906)		EA	2	*	*	*	2	63

TM5-4120-337-20/P										
(1)	(2)	(3)	(4)	(5)	(6)				(7)	
SMR	FEDERAL	DESCRIPTION	UNIT	QTY	15-DAY ORGANIZATIONAL				ILLUS-	
CODE	STOCK		OF	INC	MAINTENANCE ALW				TRATION	
	NUMBER		MEAS	IN	(a)	(b)	(c)	(d)	(a)	(b)
		REF NUMBER & MFR CODE	ON	UNIT	1-5	6-20	21-50	51-100	FIG.	ITEM
			CODE						NO.	NO.
PAOZZ	5920-243-9331	FUSE: CONTROL CIRCUIT, 2 AMPERES F09A250V2A (81349)	EA	1	*	1	2	3	2	64
XBOZZ		FUSEHOLDER 4515 (71400)	EA	1					2	65
XBOZZ		INSULATION: FUSEHOLDER MTG 13214E3814 (97403)	EA	1					2	66
PAOZZ	5920-939-5442	FUSE: CONTROL CIRCUIT, 5 AMPERES KAW5 (71400)	EA	1	*	1	2	3	2	67
PAOZZ	5310-081-8087	NUT, SELF-LOCKING: FUSEHOLDER MTG, NO. 6-32 THD SIZE MS21044N06 (96906)	EA	2	*	*	*	*	2	68
PAOZZ	5305-059-4553	SCREW, MACHINE: FUSEHOLDER MTG, NO. 6-32 THD SIZE, 1/2 IN. LG MS35190-238 (96906)	EA	2	*	*	*	*	2	69
XBOZZ		FUSEHOLDER 2819 (71400)	EA	1					2	70
XBOZZ		INSULATION: FUSEHOLDER MTG 13214E3726 (97403)	EA	1					2	71
PAOZZ	5310-081-8087	NUT, SELF-LOCKING: TERMINAL BOARD MTG, NO. 6-32 THD SIZE MS21044N06 (96906)	EA	2	*	*	*	*	2	72
PAOZZ	5305-889-3001	SCREW, MACHINE: TERMINAL BOARD MTG, NO. 6-32 THD SIZE, 5/8 IN. LG MS35206-231 (96906)	EA	2	*	*	*	*	2	73
XBOZZ		TERMINAL BOARD 699J6F (75382)	EA	1					2	74
PAOZZ	5310-877-5797	NUT, SELF-LOCKING: TERMINAL BOARD MTG, NO. 10-32 THD SIZE MS21044N3 (96906)	EA	4	*	*	*	*	2	75
PAOZZ	5305-995-3444	SCREW, MACHINE: TERMINAL BOARD MTG, NO. 10-32 THD SIZE, 7/8 IN. LG MS35207-266 (96906)	EA	4	*	*	*	*	2	76
XBOZZ		TERMINAL BOARD 39TB8 (75382)	EA	1					2	77
PAOZZ	5310-877-5797	NUT, SELF-LOCKING: RELAY MTG, NO. 10-32 THD SIZE MS21044N3 (96906)	EA	4	*	*	*	*	2	78
PAOZZ	5305-989-7435	SCREW, MACHINE: RELAY MTG, NO. 10-32 THD SIZE MS35207-264 (96906)	EA	4	*	*	*	*	2	79
PAOZZ	5945-549-6348	RELAY: HEATER CONTROL MS24192D1 (96906)	EA	1	*			1	2	80
PAOZZ	5310-877-5797	NUT, SELF-LOCKING: RELAY MTG, NO. 10-32 THD SIZE MS21044N3 (96906)	EA	4	*	*	*	*	2	81
PAOZZ	5305-989-7435	SCREW, MACHINE: RELAY MTG, NO. 10-32 THD SIZE MS35207-264 (96906)	EA	4	*	*	*	*	2	82
PAOZZ	5945-549-6348	RELAY: COMPRESSOR CONTROL MS24192D1 (96906)	EA	1	*	*	*	1	2	83
XBOZZ		JUNCTION BOX 13218E9913 (97403)	EA	1					2	84

TM5-4120-337-20/P										
(1)	(2)	(3)	(4)	(5)	(6)				(7)	
SMR	FEDERAL	DESCRIPTION	UNIT	QTY	15-DAY ORGANIZATIONAL				ILLUS-	
CODE	STOCK		OF	INC	MAINTENANCE	ALW			TRATION	
	NUMBER		MEAS	IN	(a)	(b)	(c)	(d)	(a)	(b)
		REF NUMBER & MFR CODE	ON	UNIT					FIG.	ITEM
			CODE		1-5	6-20	21-50	51-100	NO.	NO.
		GROUP 03 - CONTROL PANEL ASSEMBLY								
XBOOO		CONTROL PANEL ASSEMBLY 13218E9908-3 (97403)	EA	1					3	
PAOZZ	5305-993-1851	SCREW, MACHINE: CONTROL PANEL MTG, NO. 10-32 THD SIZE, 1 IN. LG MS35207-267 (96906)	EA	4	*	*	*	*	3	1
XBOZZ		INSULATION, ELECTRICAL: CONTROL PANEL 13214E3762 (97403)	EA	2					3	2
PBOZZ	5355-579-2896	KNOB, CONTROL: SWITCH MS25165-1 (96906)	EA	1	*	*	*	*	3	3
PBOOO	5355-472-9354	KNOB, CONTROL: THERMOSTAT MS91528-1C4B (96906)	EA	1	*	*	*	*	3	4
PAOZZ	5930-907-8948	SWITCH ROTARY 8912K216 (15605)	EA	1	*	*	*	1	3	5
PAOZZ	5305-989-7434	SCREW, MACHINE: CLAMP MTG, NO. 10-32 THD SIZE, 1/2 IN. LG MS35207-263 (96906)	EA	1	*	*	*	*	3	6
PAOZZ	5310-045-3296	WASHER, LOCK: CLAMP MTG MS35338-43 (96906)	EA	1	*	*	*	*	3	7
PAOZZ	5340-663-1979	CLAMP, LOOP: THERMOSTAT MTG, 3/8 IN. NOMINAL SIZE MS21919H6 (96906)	EA	1	*	*	*	*	3	8
PAOZZ	5310-889-2549	NUT, SELF-LOCKING: THERMOSTAT MTG, NO. 8-32 THD SIZE MS21045-08 (96906)	EA	4	*	*	*	*	3	9
PAOZZ	5305-984-6193	SCREW, MACHINE: THERMOSTAT MTG, NO. 8-32 THD SIZE, 1/2 IN. LG MS35206-245 (96906)	EA	4	*	*	*	*	3	10
PAOZZ	5310-899-2549	NUT, SELF-LOCKING: PANEL COVER MTG, NO. 8-32 THD SIZE MS21045-08 (96906)	EA	4	*	*	*	*	3	11
PAOZZ	5305-984-6193	SCREW, MACHINE: PANEL COVER MTG, NO. 8-32 THD SIZE, 1/2 IN. LG MS35206-245 (96906)	EA	4	*	*	*	*	3	12
XBOOO		PANEL 13218E9911 (97403)	EA	1					3	13
PAOZZ	5930-923-4176	THERMOSTAT, TEMPERATURE CONTROL A19AGF10 (92578)	EA	1	*	*	*	*	3	14
PAOZZ	5930-683-1628	TOGGLE SWITCH: HI-LO SPEED MS24523-22 (96906)	EA	1	*	*	*	1	3	15
PAOZZ	5305-088-9044	SCREW, MACHINE: HARNESS MTG, NO. 10-32 THD SIZE, 5/16 IN. LG MS35207-260 (96906)	EA	4	*	*	*	*	3	16
PAOZZ	5310-014-5850	WASHER, FLAT: HARNESS MTG MS27183-42 (96906)	EA	4	*	*	*	*	3	17
PAOZZ	5310-045-3296	WASHER, LOCK: HARNESS MTG MS35338-43 (96906)	EA	4	*	*	*	*	3	18
PAOZZ	5310-061-7326	NUT, SELF-LOCKING: GROUND LEAD, NO. 10-32 THD SIZE MS21045-3 (96906)	EA	1	*	*	*	*	3	19

TM5-4120-337-20/P										
(1)	(2)	(3)	(4)	(5)	(6)				(7)	
SMR	FEDERAL	DESCRIPTION	UNIT	QTY	15-DAY ORGANIZATIONAL				ILLUS-	
CODE	STOCK		OF	INC	MAINTENANCE ALW				TRATION	
	NUMBER		MEAS	IN	(a)	(b)	(c)	(d)	(a)	(b)
		REF NUMBER & MFR CODE	ON	UNIT	1-5	6-20	21-50	51-100	FIG.	ITEM
			CODE						NO.	NO.
PAOZZ	5310-014-5850	WASHER, FLAT: GROUND LEAD MS27183-42 (96906)	EA	3	*	*	*	*	3	20
PAOZZ	5305-989-7435	SCREW, MACHINE: GROUND LEAD, NO. 10-32 THD SIZE, 5/8 IN. LG MS35207-264 (96906)	EA	1	*	*	*	*	3	21
MFOFF		LEAD, ELECTRICAL MANUFACTURE FROM:	EA	2					3	22
		WIRE, ELECTRICAL, AS REQUIRED M5086-1-16-9 (81349)	EA							
		TERMINAL LUG, 1 EA MS25036-153 (96906)	EA							
		TERMINAL WIRE, 1 EA 13211E8288 (97403)	EA							
MFOFF		LEAD, ELECTRICAL MANUFACTURE FROM:	EA	1					3	23
		WIRE, ELECTRICAL, AS REQUIRED M5086-1-16-9 (81349)	EA							
		TERMINAL LUG, 1 EA MS25036-153 (96906)	EA							
		TERMINAL LUG, 1 EA MS25036-106 (96906)	EA							
MFOFF		WIRING HARNESS: CONTROL PANEL 13214E3462 (97403) MANUFACTURE FROM:	EA	1					3	24
		CONNECTOR RECEPTACLE, 1 EA 13211E8399C28-17P (97403)	EA							
		TERMINAL LUG, 1 EA MS25036-153 (96906)	EA							
		TERMINAL LUG, 1 EA MS25036-108 (96906)	EA							
		TERMINAL WIRE, 7 EA 13211E8288 (97403)	EA							
		TERMINAL LUG, 2 EA MS25036-106 (96906)	EA							
		TAPE, LACING AND TYING, AS REQUIRED MILT43435TYPE1FINISHB (81349)	EA							
		WIRE, ELECTRICAL, AS REQUIRED M5086-1-16-9 (81349)	EA							
		INSULATION SLEEVING, AS REQUIRED MILI23053-2CL1 (81349)	EA							
PBOZZ	5325-286-6047	GROMMET: THERMOSTAT CAPILLARY TUBE MS35490-1 (96906)	EA	1	*	*	*	*	3	25
PAOZZ	5305-984-6194	SCREW, MACHINE: THERMOSTAT BULB MTG, NO. 8-32 THD SIZE, 5/8 IN. LG MS35206-246 (96906)	EA	1	*	*	*	*	3	26
PAOZZ	5340-105-8328	CLAMP, LOOP: THERMOSTAT BULB MTG MS21104D6 (96906)	EA	1	*	*	*	*	3	27
XBOZZ		GROMMET: THERMOSTAT CAPILLARY TUBE 1000 (75543)	EA	1					3	28
XBOOO		CONTROL PANEL 13218E9909 (97403)	EA	1					3	29

TM5-4120-337-20/P										
(1)	(2)	(3)	(4)	(5)	(6)				(7)	
SMR	FEDERAL	DESCRIPTION	UNIT	QTY	15-DAY ORGANIZATIONAL				ILLUS-	
CODE	STOCK		OF	INC	MAINTENANCE ALW				TRATION	
	NUMBER		MEAS	IN	(a)	(b)	(c)	(d)	(a)	(b)
		REF NUMBER & MFR CODE	ON	UNIT	1-5	6-20	21-50	51-100	FIG.	ITEM
			CODE						NO.	NO.
PAOZZ	5320-932-1972	RIVET, BLIND: INFORMATION PLATE MTG AD42H (07707)	EA	6	*	*	*	*	3	30
XBOZZ		PLATE, INFORMATION: CONTROL PANEL 13218E9912 (97403)	EA	1					3	31
		GROUP 04 - BLOCK-OFF PANEL ASSEMBLY								
XBOZZ		BLOCK-OFF PANEL ASSEMBLY 13214E3665 (97403)	EA	1					4	
PAOZZ	5310-081-8087	NUT, SELF-LOCKING: COVER MTG, NO. 6-32 THD SIZE MS21044N06 (96906)	EA	4	*	*	*	*	4	1
PAOZZ	5305-889-3001	SCREW, MACHINE: COVER MTG, NO. 6-32 THD SIZE, 5/8 IN. LG MS35206-231 (96906)	EA	4	*	*	*	*	4	2
XBOZZ		COVER: ALTERNATOR ELECTRICAL CONNECTOR 13214E3471-2 (97403)	EA	1					4	3
PAOZZ	5305-053-1114	SCREW, TAPPING: COVER MTG, NO. 4-24 THD SIZE, 1/2 IN. LG MS24621-11 (96906)	EA	4	*	*	*	*	4	4
XBOZZ		RETAINER RING: ELECTRICAL CONNECTOR MTG C6974-20-41 (78553)	EA	1					4	5
XBOZZ		COVER: ALTERNATOR ELECTRICAL CONNECTOR 13214E3471-1 (97403)	EA	1					4	6
XBOZZ		BLOCK-OFF 13214E3689 (97403)	EA	1					4	7
		GROUP 05 - FAN ASSEMBLY								
PAOZZ	5305-984-6195	SCREW, MACHINE: FAN GUARD MTG, NO. 8-32 THD SIZE, 3/4 IN. LG MS35206-247 (96906)	EA	8	*	*	*	*	5	1
PAOZZ	5310-045-3299	WASHER, LOCK: FAN GUARD MTG MS35338-42 (96906)	EA	8	*	*	*	*	5	2
PAOZZ	5310-821-2366	WASHER, FLAT: FAN GUARD MTG 13214E3469 (97403)	EA	8	*	*	*	*	5	3
XBOOO		GUARD, FAN 13214E3612 (97403)	EA	1					5	4
PAOZZ	5305-929-6558	SCREW, SET: CONDENSER FAN MTG, 1/4-20 THD SIZE, 3/4 IN. LG MS51021-62 (96906)	EA	2	*	*	*	*	5	5
XBOZZ		IMPELLER, FAN, AXIAL: CONDENSER 13214E3694 (97403)	EA	1					5	6
PAOZZ	5315-730-4570	KEY, MACHINE: CONDENSER FAN MTG MS20066-145 (96906)	EA	1	*	*	*	*	5	7
PAOZZ	5305-984-6194	SCREW, MACHINE: INLET RING MTG, NO. 8-32 THD SIZE, 5/8 IN. LG MS35206-246 (96906)	EA	6	*	*	*	*	5	8
PAOZZ	5310-809-8544	WASHER, FLAT: INLET RING MTG MS27183-7 (96906)	EA	6	*	*	*	*	5	9
PAOZZ	5310-045-3299	WASHER, LOCK: INLET RING MTG MS35338-42 (96906)	EA	6	*	*	*	*	5	10

TM5-4120-337-20/P										
(1)	(2)	(3)	(4)	(5)	(6)				(7)	
SMR	FEDERAL STOCK	DESCRIPTION	UNIT OF MEAS	QTY INC	15-DAY ORGANIZATIONAL MAINTENANCE ALW				ILLUS-TRATION	
CODE	NUMBER		USABLE ON CODE	IN UNIT	(a)	(b)	(c)	(d)	(a)	(b)
		REF NUMBER & MFR CODE			1-5	6-20	21-50	51-100	FIG. NO.	ITEM NO.
XBOZZ		RING, INLET, FAN 13214E3547 (97403)	EA	1					5	11
PAOZZ	5305-929-6558	SCREW, SET: EVAPORATE FAN MTG, 1/4-20 THD SIZE, 3/4 IN. LG MS51021-62 (96996)	EA	2	*	*	*	*	5	12
XBOZZ		IMPELLER, FAN CNETRIFUGAL R661-72D113 (97450)	EA	1					5	13
XBOZZ	5315-730-4564	KEY, MACHINE: EVAPORATE FAN MTG MS20066-143 (96906)	EA	1					5	14
PAOZZ	5305-984-6194	SCREW, MACHINE: BAFFLE MTG, NO. 8-32 THD SIZE, 5/8 IN. LG MS35206-246 (96906)	EA	4	*	*	*	*	5	15
PAOZZ	5310-809-8544	WASHER, FLAT: BAFFLE MTG MS27183-7 (96906)	EA	4	*	*	*	*	5	16
PAOZZ	5310-045-3299	WASHER, LOCK: BAFFLE MTG MS35338-42 (96906)	EA	4	*	*	*	*	5	17
PAOZZ		SCREW, MACHINE: BRACKET MTG, NO. 10-32 THD SIZE, 1/4 IN. LG MS35191-268 (96906)	EA	4	*	*	*	*	5	18
XBOOO		BRACKET: BAFFLE MTG 13214E3627 (97403)	EA	2					5	19
XBOZZ		BAFFLE 13214E3623 (97403)	EA	1					5	20
PAOZZ	5310-087-4652	NUT, SELF-LOCKING: FAN METER MTG, 3/8-16 THD SIZE MS51922-17 (96906)	EA	4	*	*	*	*	5	21
PAOZZ	5310-080-6004	WASHER, FLAT: FAN METER MTG MS27183-14 (96906)	EA	4	*	*	*	*	5	22
PAOZZ	5305-269-3212	SCREW, MACHINE: FAN METER MTG 3/8-16 THD SIZE, 1 1//8 IN. LG MS90725-61 (96906)	EA	4	*	*	*	*	5	23
PAOZZ	5305-225-8503	SCREW, MACHINE: FAN METER MTG 5/16-18 THD SIZE, 1 3/4 IN. LG MS90725-39 (96906)	EA	2	*	*	*	*	5	24
XBOZZ		SLEEVE: FAN MOTOR MTG 13217E5636 (97403)	EA	2					5	25
PAOZZ	5310-081-4219	WASHER, FLAT: FAN MOTOR MTG MS27183-12 (96906)	EA	2	*	*	*	*	5	26
PAOZZ	5310-407-9566	WASHER, LOCK: FAN MOTOR MTG MS35338-45 (96906)	EA	2	*	*	*	*	5	27
PAOFF	6105-103-4514	MOTOR, ALTERNATING CURRENT 4730-18 (64731)	EA	1	*	*	*	1	5	28
XBOZZ		BRACKET, MOTOR MTG 13214E3625 (97403)	EA	1					5	29
GROUP 06 - MOTOR ASSEMBLY										
PAOFF	6105-103-4514	MOTOR, ALTERNATING CURRENT 13214E3728-8 (97403)	EA	1	*	*	*	1	6	
PAOZZ		SCREW: END BELL MTG 02-009264-005 (64731)	EA	4	*	*	*	*	6	1
PAOZZ		SCREW: CONNECTOR MTG 02-009264-004 (64731)	EA	4	*	*	*	*	6	5
PAOZZ	5935-821-0345	CONNECTOR: MOTOR MS3102R14S6P (96906)	EA	1	*	*	*	*	6	6
PAOZZ		SCREW: TERMINAL BOX MTG 02-009264-003 (64731)	EA	4	*	*	*	*	6	7

(1)	(2)	(3)	(4)	(5)	(6)				(7)	
SMR	FEDERAL STOCK NUMBER	DESCRIPTION	UNIT OF MEAS	QTY INC	15-DAY ORGANIZATIONAL MAINTENANCE ALW				ILLUS-TRATION	
CODE	NUMBER	REF NUMBER & MFR CODE	USABLE ON CODE	IN UNIT	(a)	(b)	(c)	(d)	(a)	(b)
					1-5	6-20	21-50	51-100	NO.	NO.
XBOZZ		TERMINAL BOX 02-009089-000 (64731)	EA	1					6	8
XBOZZ	4130-106-1971	OVERLOAD PROTECTOR 01-008773-020 (64731)	EA	1					6	9
		GROUP 07 - HEATER ASSEMBLY								
XBOZZ		CLAMP: HEATER RETAINER 13214E3416 (97403)	EA	6					7	1
PAOZZ	5310-880-9344	WASHER, RETAINING: CLAMP MTG 12-11014-12 (94222)	EA	6	*	*	*	*	7	2
PAOZZ	5305-163-8349	SCREW, PANEL FASTENER: CLAMP MTG 12-11-613-11 (94222)	EA	6	*	*	*	*	7	3
PAOZZ	4540-110-9660	HEATING ELEMNET: ELECTRICAL 13214E3698-1 (97403)	EA	6	*	*	*	*	7	4
PAOZZ	5305-857-5867	SCREW, MACHINE: SUPPORT MTG, NO. 10-32 THD SIZE, 1/2 IN. LG MS9122-03 (96906)	EA	2	*	*	*	*	7	5
PAOZZ	5310-809-8546	WASHER, FLAT: SUPPORT MTG MS27183-8 (96906)	EA	2	*	*	*	*	7	6
PAOZZ	5310-877-5797	NUT, SELF-LOCKING: SUPPORT MTG, NO. 10-32 THD SIZE MS21044N3 (96906)	EA	4	*	*	*	*	7	7
PAOZZ	5330-119-7503	WASHER, PACKING: SUPPORT MTG NAS1523C3F (80205)	EA	4	*	*	*	*	7	8
PAOZZ	5305-989-7435	SCREW, MACHINE: SUPPORT MTG, NO. 10-32 THD SIZE, 5/8 IN. LG MS35207-264 (96906)	EA	4	*	*	*	*	7	9
XBOZZ		SUPPORT, HEATER 13214E3629-1 (97403)	EA	1					7	10
		GROUP 08 - WIRING HARNESSSES AND CLAMPS								
PAOZZ	5305-984-6195	SCREW, MACHINE: THERMOSTAT MTG, NO. 8-32 THD SIZE, 3/4 IN. LG MS35206-247 (96906)	EA	2	*	*	*	*	8	1
XBOZZ		GASKET: THERMOSTAT MTG 13211E8273 (97403)	EA	1					8	2
PAOZZ	5305-053-1114	SCREW, TAPPING: HARNESS MTG, NO. 4-24 THD SIZE, 1/2 IN. LG MS24621-11 (96906)	EA	4	*	*	*	*	8	3
XBOZZ		CAP, ELECTRICAL CONNECTOR MS25043-20D (96906)	EA	1					8	4
XBOZZ		GASKET: HARNESS MTG MS51007-7 (96906)	EA	1					8	5
PAOZZ	5325-263-6632	GROMMET: PRESSURE SWITCH ENCLOSURE MS35490-6 (96906)	EA	1	*	*	*	*	8	6
PAOZZ	5310-060-2039	NUT, SELF-LOCKING: THERMOSTAT MTG, NO. 8-32 THD SIZE MS21044D08 (96906)	EA	2	*	*	*	*	8	7
PAOZZ	5310-809-8544	WASHER, FLAT: THERMOSTAT MTG MS27183-7 (96906)	EA	2	*	*	*	*	8	8
PAOZZ	5305-984-6194	SCREW, MACHINE: THERMOSTAT MTG, NO. 8-32 THD SIZE, 5/8 IN. LG MS35206-246 (96906)	EA	2	*	*	*	*	8	9
MFOFF		WIRING HARNESS: HEATER THERMOSTAT 13214E3457-1 (97403) MANUFACTURE FROM: WIRE, ELECTRICAL, AS REQUIRED M5086-1-14-9 (81349)	EA	1					8	10

TM5-4120-337-20/P										
(1)	(2)	(3)	(4)	(5)	(6)				(7)	
SMR	FEDERAL STOCK NUMBER	DESCRIPTION	UNIT OF MEAS	QTY INC	15-DAY ORGANIZATIONAL MAINTENANCE ALW				ILLUS-TRATION	
CODE	NUMBER		USABLE ON CODE	IN	(a)	(b)	(c)	(d)	(a)	(b)
		REF NUMBER & MFR CODE		UNIT	1-5	6-20	21-50	51-100	FIG. NO.	ITEM NO.
		CONNECTOR, 1 EA MS3100R16-10P (96906)								
		THERMOSTAT, 1 EA MWA1256 (82647)								
		WIRE, ELECTRICAL, AS REQUIRED MS086-1-16-9 (81349)								
		INSULATION SLEEVING, AS REQUIRED MILI23053-2CL1 (81349)								
		TERMINAL LUG, 4 EA MS25036-108 (96906)								
MPOFF		LEAD, ELECTRICAL MANUFACTURE FROM:	EA	8					8	11
		WIRE, ELECTRICAL, AS REQUIRED MS086-1-16-9 (81349)								
		TERMINAL LUG, 2 EA MS25036-108 (96906)								
PAOZZ	5310-088-0551	NUT, SELF-LOCKING: HARNESS MTG, NO. 4-40 THD SIZE MS21044N04 (96906)	EA	4	*	*	*	*	8	12
PAOZZ	5305-984-4976	SCREW, MACHINE: HARNESS MTG, NO. 4-40 THD SIZE, 3/4 IN. LG MS35206-219 (96906)	EA	4	*	*	*	*	8	13
PAOZZ	5305-995-3442	SCREW, MACHINE: CLAMP MTG, NO. 10-32 THD SIZE, 1 1/4 IN. LG MS35207-268 (96906)	EA	2	*	*	*	*	8	14
XBOZZ		SPACER: CLAMP MTG, 1/2 IN. LG 13211E8376-1 (97403)	EA	2					8	15
PAOZZ	5340-020-0383	CLAMP, LOOP: HARNESS MTG, 9/16 IN. NOM MS21104D9 (96906)	EA	2	*	*	*	*	8	16
PAOZZ	5310-081-8087	NUT, SELF-LOCKING: RELAY MTG, NO. 6-32 THD SIZE MS21044N06 (96906)	EA	2	*	*	*	*	8	17
PAOZZ	5310-082-1404	WASHER, FLAT: RELAY MTG MS27183-6 (96906)	EA	2	*	*	*	*	8	18
PAOZZ	5305-984-6222	SCREW, MACHINE: RELAY MTG, NO. 6-32 THD SIZE, 1 1/4 IN. LG MS35206-235 (96906)	EA	2	*	*	*	*	8	19
PBOZZ	5945-106-7100	RELAY: FAN SPEED CONTROL MTS004 (04009)	EA	1	*	*	*	*	8	20
PAOZZ	5310-811-3494	NUT, SELF-LOCKING: CAPACITOR STRAP MTG, NO. 8-32 THD SIZE MS21044N08 (96906)	EA	2	*	*	*	*	8	21
PAOZZ	5305-984-6194	SCREW, MACHINE: CAPACITOR STRAP MTG, NO. 8-32 THD SIZE, 5/8 IN. LG MS35206-246 (96906)	EA	2	*	*	*	*	8	22
XBOZZ		STRAP, RETAINING: CAPACITOR MTG 13214E3531 (97403)	EA	1					8	23
PAOZZ		CAPACITOR: FAN MOTOR 13214E3529-2 (97403)	EA	1	*	*	*	1	8	24
PAOZZ		CAPACITOR: COMPRESSOR 13214E3529-5 (97403)	EA	1	*	*	*	1	8	25
PAOZZ	5305-984-6194	SCREW, MACHINE: CAPACITOR BRACKET MTG, NO. 8-32 THD SIZE, 5/8 IN. LG MS35206-246 (96906)	EA	4	*	*	*	*	8	26
XBOZZ		BRACKET, MOUNTING: CAPACITOR 13214E3527 (97403)	EA	1					8	27

(1)	(2)	(3)	(4)	(5)	(6)	(7)
SMR	FEDERAL STOCK	DESCRIPTION	UNIT OF MEAS	QTY INC	15-DAY ORGANIZATIONAL MAINTENANCE ALW	ILLUS-TRATION
CODE	NUMBER	REF NUMBER & MFR CODE	USABLE ON CODE	IN	(a) (b) (c) (d)	(a) (b) FIG. ITEM NO. NO.
MFOFF		WIRING HARNESS 13218E9894 (97403) MANUFACTURE FROM: CONNECTOR, 1 EA MS3106R32-7S (96906) CONNECTOR, 1 EA MS3100R28-17S (96906) CONNECTOR, 1 EA MS3100R20-4PX (96906) CONNECTOR, 1 EA MS3106R14S6S (96906) RETAINER RING, 1 EA C6974-20-41 (78553) CONNECTOR, BOX, ELECTRICAL, 2 EA DB92100 (49367) SWITCH, PRESSURE, 1 EA 6PS306N405N285L (82647)	EA	1	1-5 6-20 21-50 51-100	8 28
4810-109-3830		VALVE, SOLENOID, 2 EA 0158 (93781) THERMOSTAT, 1 EA 416-25 (93410) INSULATION SLEEVING, AS REQUIRED MILI23053-2CL1 (81349) TERMINAL LUG, 2 EA MS25036-153 (96906) TERMINAL, WIRE, 10 EA 13216E9515 (97403) TAPE, IMPREGNATED, LACING AND TYING, AS REQUIRED SIZE 3, TYPE 1, FINISH B MILT43435 (81349) PLUG, END SEAL, 5 EA MS25251-12 (96906) PLUG, END SEAL, 6 EA MS25251-16 (96906) WIRE, ELECTRICAL, AS REQUIRED M5086-1-16-9 (81349) WIRE, ELECTRICAL, AS REQUIRED M5086/1-12-9 (81349) PLATE, MOUNTING: THERMOSTAT, 1 EA R655-71C105 (97450)				
MFOFF		WIRING HARNESS 13214E3723 (97403) MANUFACTURE FROM: CONNECTOR, 1 EA MS3106R28-9P (96906) CONNECTOR, 1 EA MS3106R20-15S CONNECTOR, 1 EA MS3106R16-10S (96906) TERMINAL LUG, 4 EA 13216E6191-2 (97403) TAPE, IMPREGNATED, LACING AND TYING, AS REQUIRED SIZE 3, TYPE 1, FINISH B MILT43435 (81349)	EA	1		8 29

TM5-4120-337-20/P											
(1)	(2)	(3)		(4)	(5)	(6)				(7)	
SMR	FEDERAL STOCK	DESCRIPTION		UNIT OF MEAS	QTY INC	15-DAY ORGANIZATIONAL MAINTENANCE ALW				ILLUS-TRATION	
CODE	NUMBER		USABLE ON CODE		IN	(a)	(b)	(c)	(d)	(a)	(b)
		REF NUMBER & MFR CODE			UNIT	1-5	6-20	21-50	51-100	FIG. NO.	ITEM NO.
		WIRE, ELECTRICAL, AS REQUIRED MS086-1-16-9 (81349)									
		PLUG, END SEAL, 2 EA MS25251-16 (96906)									
		GROUP 09 - MIST ELIMINATOR, EVAPORATOR AND CONDENSER COILS, VALVES, DEHYDRATOR, RECEIVER, SIGHT GLASS AND PIPING									
PAOZZ	5305-857-5867	SCREW, MACHINE: COIL MTG, NO. 10-32 THD SIZE, 1/2 IN. LG MS9122-03 (96906)		EA	4	*	*	*	*	9	1
PAOZZ	5310-809-8546	WASHER, FLAT: COIL MTG MS27183-8 (96906)		EA	4	*	*	*	*	9	2
XBOZZ		BRACKET: MIST ELIMINATOR MTG R661-71C139 (97450)		EA	1					9	3
XBOZZ		BRACKET: MIST ELIMINATOR MTG R661-71C141 (97450)		EA	1					9	4
XBOZZ		MIST ELIMINATOR R65-71C140-2 (97450)		EA	1					9	5
PAOZZ		TAPE, INSULATION: VALVE BULB SEAL PT1 (87698)		RL	V	*	*	*	*	9	10
PAOZZ	5305-984-6194	SCRW, MACHINE: CLAMP MTG, NO. 8-32 THD SIZE, 5/8 IN. LG MS35206-246 (96906)		EA	1	*	*	*	*	9	11
PAOZZ	5340-105-8328	CLAMP, LOOP: 3/8 IN. NOM SIZE, LINE MTG MS21104D6 (96906)		EA	1	*	*	*	*	9	12
XBOZZ		GROMMET, SPLIT: 1/2 IN. ID MS35490-14 (96906)		EA	1					9	17
PAOZZ	5310-637-9541	WASHER, LOCK: VALVE MTG MS35338-46 (96906)		EA	2	*	*	*	*	9	20
XBOZZ		SPACER: VALVE MTG, 7-16 IN. LG 13211E8376-3 (97403)		EA	2					9	21
PAOZZ	5310-811-3494	NUT, SELF-LOCKING: SIGHT GLASS BRACKET MTG, NO. 8-32 THD SIZE MS2104N04 (96906)		EA	2	*	*	*	*	9	27
XBOZZ		BRACKET: SIGHT GLASS MTG 13214E3419 (97403)		EA	1					9	28
PAOZZ	5310-809-8544	WASHER, FLAT: SIGHT GLASS MTG MS27183-7 (96906)		EA	2	*	*	*	*	9	29
PAOZZ	5305-984-6194	SCREW, MACHINE: SIGHT GLASS MTG, NO. 8-32 THD SIZE, 5/8 IN. LG MS35206-246 (96906)		EA	2	*	*	*	*	9	30
XBOZZ		GASKET: SIGHT GLASS MTG 13211E8255 (97403)		EA	1					9	31
XBOZZ		SPACER: SIGHT GLASS MTG 13211E8242 (97403)		EA	1					9	32
PAOZZ	5305-995-3442	SCREW, MACHINE: CLAMP MTG, NO. 10-32 THD SIZE, 1 1/4 IN. LG MS35207-268 (96906)		EA	1	*	*	*	*	9	34
XBOZZ		SPACER: CLAMP MTG, 1/2 IN. LG 13211E8376-1 (97403)		EA	1					9	35

TM5-4120-337-20/P			(4)	(5)	(6)				(7)	
(1)	(2)	(3)	UNIT	QTY	15-DAY ORGANIZATIONAL				ILLUS-	
SMR	FEDERAL	DESCRIPTION	OF	INC	MAINTENANCE	ALW			TRATION	
CODE	STOCK		MEAS	IN	(a)	(b)	(c)	(d)	(a)	(b)
	NUMBER		ON	UNIT					FIG.	ITEM
		REF. NUMBER & MFR CODE	CODE		1-5	6-20	21-50	51-100	NO.	NO.
PAOZZ	5340-106-0549	CLAMP, LOOP: 1/4 IN. NO. SIZE MS21104D4 (96906)	EA	1	*	*	*	*	9	36
PAOZZ	5340-105-8328	CLAMP, LOOP: 3/8 IN. NO. SIZE MS21104D6 (96906)	EA	1	*	*	*	*	9	37
PAOZZ	5310-045-3296	WASHER, LOCK: CLAMP MTG MS35338-43 (96906)	EA	1	*	*	*	*	9	38
XBOZZ	5325-286-6047	GROMMET: 1/8 IN. ID MS35490-1 (96906)	EA	1					9	42
PAOZZ	5310-877-5797	NUT, SELF-LOCKING: TUBE MTG, NO. 10-32 THD SIZE MS21044N3 (96906)	EA	1	*	*	*	*	9	43
XBOZZ		SPACER: TUBE MTG, 1/2 IN. LG 13211E8376-1 (97403)	EA	1					9	44
PAOZZ	5340-106-0549	CLAMP, LOOP: 1/4 IN. NOM SIZE MS21104D4 (96906)	EA	1	*	*	*	*	9	45
PAOZZ	5305-993-1851	SCREW, MACHINE: CLAMP MTG, NO. 10-32 THD SIZE, 1 IN. LG MS35207-267 (96906)	EA	1	*	*	*	*	9	46
XBOZZ	5325-263-6632	GROMMET: 1/4 IN. ID MS35490-6 (96906)	EA	1					9	48
XBOZZ		BUSHING, FLUSH W1706 (41947)	EA	1					9	49
PAOZZ	5310-637-9541	WASHER, LOCK: VALVE MTG MS35338-46 (96906)	EA	2	*	*	*	*	9	50
XBOZZ		SPACER: VALVE MTG, 7/16 IN. LG 13211E8376-3 (97403)	EA	2					9	51
PAOZZ	5305-989-7435	SCREW, MACHINE: CLAMP MTG, NO. 10-32 THD SIZE, 5/8 IN. LG MS35207-264 (96906)	EA	1	*	*	*	*	9	54
PAOZZ	5340-105-8328	CLAMP, LOOP: 3/8 IN. NOM SIZE MS21104D6 (96906)	EA	1	*	*	*	*	9	55
PAOZZ	5305-984-6194	SCREW, MACHINE: BRACKET MTG, NO. 8-32 THD SIZE, 5/8 IN. LG MS35206-246 (96906)	EA	2	*	*	*	*	9	58
PAOZZ	5305-984-6193	SCREW, MACHINE: VALVE MTG, NO. 8-32 THD SIZE 1/2 IN. LG MS35206-245 (96906)	EA	2	*	*	*	*	9	59
PAOZZ	5310-045-3299	WASHER, LOCK: VALVE MTG MS35338-42 (96906)	EA	2	*	*	*	*	9	60
XBOZZ		BRACKET: VALVE MTG 13214E3592-1 (97403)	EA	1					9	61
PAOZZ	4730-189-2739	NUT, FLARE: 3/8 FLARE A5052 (41947)	EA	1	*	*	*	*	9	67
PAOZZ		SCREW, MACHINE: BRACKET MTG, 1/4-28 THD SIZE, 5/8 IN. LG MS35207-280 (96906)	EA	3	*	*	*	*	9	68
PAOZZ		WASHER, LOCK: BRACKET MTG MS35338-44 (96906)	EA	3	*	*	*	*	9	69
PAOZZ		NUT, HEXAGON: DRIER MTG, 1/4-28 THD SIZE MS35650-3252 (96906)	EA	1	*	*	*	*	9	70
PAOZZ		WASHER, LOCK: DRIER MTG MS35338-44 (96906)	EA	1	*	*	*	*	9	71
PAOZZ		SCREW, MACHINE: DRIER MTG, 1/4-28 THD SIZE, 1 1/2 IN. LG MS35207-285 (96906)	EA	1	*	*	*	*	9	72

TM5-4120-337-20/P										
(1)	(2)	(3)	(4)	(5)	(6)				(7)	
SMR	FEDERAL	DESCRIPTION	UNIT	QTY	15-DAY ORGANIZATIONAL				ILLUS-	
CODE	STOCK		OF	INC	MAINTENANCE ALW				TRATION	
	NUMBER		MEAS	IN	(a)	(b)	(c)	(d)	(a)	(b)
		REF NUMBER & MFR CODE	ON	UNIT	1-5	6-20	21-50	51-100	FIG.	ITEM
			USABLE						NO.	NO.
			CODE							
XBOZZ		BRACKET ASSEMBLY: DRIER MTG R655-71C122-1 (97450)		EA	1				9	73
PAOZZ	4730-189-2739	NUT, FLARE: 3/8 FLARE A5052 (41947)		EA	1	*	*	*	9	74
PAOZZ		NUT, HEXAGON: RECEIVER MTG, 1/4-28 THD SIZE MS35650-3252 (96906)		EA	2	*	*	*	9	77
PAOZZ		WASHER, LOCK: RECEIVER MTG MS35338-44 (96906)		EA	2	*	*	*	9	78
PAOZZ		SCREW, MACHINE: RECEIVER MTG, 1/4-28 THD SIZE, 2 IN. LG MS35207-287 (96906)		EA	2	*	*	*	9	79
XBOZZ		BRACKET ASSEMBLY: RECEIVER MTG R655-71C122-2 (97450)		EA	2				9	80
PAOZZ	5310-877-5797	NUT, SELF-LOCKING: CLAMP MTG, NO. 10-32 THD SIZE MS21044N3 (96906)		EA	1	*	*	*	9	83
PAOZZ	5305-989-7434	SCREW, MACHINE: CLAMP MTG, NO. 10-32 THD SIZE, 1/2 IN. LG MS35207-263 (96906)		EA	1	*	*	*	9	84
PAOZZ	5340-106-0549	CLAMP, LOOP: 1/4 IN. NOM SIZE MS21104D4 (96906)		EA	1	*	*	*	9	85
		GROUP 10 - VALVES, PRESSURE SWITCHES AND PIPING								
PAOZZ	5310-877-5797	NUT, SELF-LOCKING: CLAMP MTG, NO. 10-32 THD SIZE MS21044N3 (96906)		EA	1	*	*	*	10	1
PAOZZ	5340-106-0549	CLAMP, LOOP: 1/4 IN. NOM SIZE MS21104D4 (96906)		EA	1	*	*	*	10	2
PAOZZ	5305-989-7434	SCREW, MACHINE: CLAMP MTG, NO. 10-32 THD SIZE, 1/2 IN. LG MS35207-263 (96906)		EA	1	*	*	*	10	3
PAOZZ	5310-877-5797	NUT, SELF-LOCKING: BRACKET MTG, NO. 10-32 THD SIZE MS21044N3 (96906)		EA	2	*	*	*	10	5
PAOZZ	5305-989-7434	SCREW, MACHINE: BRACKET MTG, NO. 10-32 THD SIZE, 1/2 IN. LG MS35207-263 (96906)		EA	2	*	*	*	10	6
XBOZZ		BRACKET: SERVICE VALVE MTG R661-72C107 (97450)		EA	1				10	7
PAOZZ	5310-877-5797	NUT, SELF-LOCKING: CLAMP MTG, NO. 10-32 THD SIZE MS21044N3 (96906)		EA	1	*	*	*	10	12
XBOZZ		SPACER: CLAMP MTG, 1/2 IN. LG 13211E8376-1 (97403)		EA	1				10	13
PAOZZ	5340-105-8328	CLAMP, LOOP: 3/8 IN. NOM SIZE MS21104D6 (96906)		EA	1	*	*	*	10	14
PAOZZ	5305-995-3442	SCREW, MACHINE: CLAMP MTG, NO. 10-32 THD SIZE, 1 1/4 IN. LG MS35207-268 (96906)		EA	1	*	*	*	10	15
PAOZZ	5305-993-1849	SCREW, MACHINE: COIL MTG, NO. 10-32 THD SIZE, 3/4 IN. LG MS35207-265 (96906)		EA	6	*	*	*	10	17
PAOZZ	5310-821-2366	WASHER, FLAT: COIL MTG 13214E3469 (97403)		EA	6	*	*	*	10	18
PAOZZ	5305-984-4989	SCREW, MACHINE: VALVE MTG, NO. 6-32 THD SIZE, 7/16 IN. LG MS35206-229 (96906)		EA	2	*	*	*	10	27

TM5-4120-337-20/P										
(1)	(2)	(3)	(4)	(5)	(6)				(7)	
SMR	FEDERAL	DESCRIPTION	UNIT	QTY	15-DAY ORGANIZATIONAL				ILLUS-	
CODE	STOCK		OF	INC	MAINTENANCE ALW				TRATION	
	NUMBER		MEAS	IN	(a)	(b)	(c)	(d)	(a)	(b)
		REF NUMBER & MFR CODE	ON	UNIT	1-5	6-20	21-50	51-100	FIG.	ITEM
			CODE						NO.	NO.
PAOZZ	5310-045-3299	WASHER, LOCK: VALVE MTG MS35338-42 (96906)	EA	2	*	*	*	*	10	28
PAOZZ	5305-984-6193	SCREW, MACHINE: BRACKET MTG, NO. 8-32 THD SIZE, 1/2 IN. LG MS35206-245 (96906)	EA	4	*	*	*	*	10	29
PAOZZ	5310-809-8544	WASHER, FLAT: BRACKET MTG MS27183-7 (96906)	EA	4	*	*	*	*	10	30
XBOZZ		BRACKET: VALVE MTG 13214E3377 (97403)	EA	1					10	32
PAOZZ	5310-877-5797	NUT, SELF-LOCKING: VALVE MTG, NO. 10-32 THD SIZE MS21044N3 (96906)	EA	1	*	*	*	*	10	34
PAOZZ	5340-106-0551	CLAMP, LOOP: 5/8 IN. NOM SIZE MS21104D10 (96906)	EA	1	*	*	*	*	10	35
PAOZZ	5305-989-7435	SCREW, MACHINE: VALVE MTG, NO. 10-32 THD SIZE SIZE, 5/8 IN. LG MS35207-264 (96906)	EA	1	*	*	*	*	10	36
PAOZZ	5305-995-6311	SCREW, MACHINE: CLAMP MTG,, NO. 10-32 THD SIZE, 2 IN. LG MS35207-271 (96906)	EA	1	*	*	*	*	10	41
XBOZZ		SPACER: CLAMP MTG, 1 5/16 IN. LG 13211E8376-2 (97403)	EA	1					10	42
PAOZZ	5340-106-0550	CLAMP, LOOP: 1/2 IN. NOM SIZE MS21104D8 (96906)	EA	1	*	*	*	*	10	43
PAOZZ	5310-045-3296	WASHER, LOCK: CLAMP MTG MS35338-43 (96906)	EA	1	*	*	*	*	10	44
PAOZZ	5305-995-6311	SCREW, MACHINE: CLAMP MTG, NO. 10-32 THD SIZE, 2 IN. LG MS35207-271 (96906)	EA	1	*	*	*	*	10	51
XBOZZ		SPACER: CLAMP MTG, 1 5/16 IN. LG 13211E8376-2 (97403)	EA	1					10	52
PAOZZ	5340-106-0550	CLAMP, LOOP: 1/2 IN. NOM SIZE MS21104D8 (96906)	EA	1	*	*	*	*	10	53
PAOZZ	5310-045-3296	WASHER, LOCK: CLAMP MTG MS35338-43 (96906)	EA	1	*	*	*	*	10	54
XBOZZ		TAPE, ADHESIVE: INSULATION WRAPPING MILT2085TYPE1 (81349)	RL	V					10	55
XBOZZ		FOAM, PLASTIC: TUBING INSULATION, 1/2 IN. ID, 1/2 IN. WALL THK MILP15280FORMT (81349)	FT	V					10	56
PAOZZ		TAPE, INSULATION: VALVE BULB SEAL PT1 (87698)	RL	V	*	*	*	*	10	60
PAOZZ	5310-877-5797	NUT, SELF-LOCKING: CLAMP MTG, NO. 10-32 THD SIZE MS21044-N3 (96906)	EA	2	*	*	*	*	10	63
XBOZZ		SPACER: CLAMP MTG, 1/2 IN. LG 13211E8376-1 (97403)	EA	2	*	*	*	*	10	64
PAOZZ	5340-105-8328	CLAMP, LOOP: 3/8 IN. NOM SIZE MS21104D6 (96906)	EA	2	*	*	*	*	10	65
PAOZZ	5305-995-3442	SCREW, MACHINE: CLAMP MTG, NO. 10-32 THD SIZE, 1 1/4 IN. LG MS35207-268 (96906)	EA	2	*	*	*	*	10	66
PAOZZ	5305-995-3441	SCREW, MACHINE: CLAMP MTG, NO. 10-32 THD SIZE, 1 1/2 IN. LG MS35207-269 (96906)	EA	1	*	*	*	*	10	67
XBOZZ		SPACER: CLAMP MTG, 7/8 IN. LG 13214E3372-2 (97403)	EA	1					10	68

TM5-4120-337-20/P										
(1)	(2)	(3)	(4)	(5)	(6)				(7)	
SMR	FEDERAL	DESCRIPTION	UNIT	QTY	15-DAY ORGANIZATIONAL				ILLUS-	
CODE	STOCK		OF	INC	MAINTENANCE ALW				TRATION	
	NUMBER		MEAS	IN	(a)	(b)	(c)	(d)	(a)	(b)
		REF NUMBER & MFR CODE	ON	UNIT	1-5	6-20	21-50	51-100	FIG.	ITEM
			CODE						NO.	NO.
PAOZZ	5340-105-8328	CLAMP, LOOP: 3/8 IN. NOM SIZE MS21104D6 (96906)	EA	1	*	*	*	*	10	69
PAOZZ	5310-045-3296	WASHER, LOCK: CLAMP MTG MS35338-43 (96906)	EA	1	*	*	*	*	10	70
		GROUP 11 - HIGH AND LOW PRESSURE SWITCHES AND ENCLOSURE								
PAOZZ	5305-984-4992	SCREW, MACHINE: ENCLOSURE MTG, NO. 6-32 THD SIZE, 3/4 IN. LG MS35206-232 (96906)	EA	4	*	*	*	*	11	1
XBOZZ		PLATE, INSTRUCTION: PRESSURE SWITCH 13216E9520-1 (97403)	EA	1					11	2
XBOZZ		GASKET: PRESSURE SWITCH ENCLOSURE 13216E9519-1 (97403)	EA	1					11	3
PAOZZ	5305-984-4984	SCREW, MACHINE: SWITCH MTG, NO. 6-32 THD SIZE, 5/16 IN. LG MS35206-227 (96906)	EA	4	*	*	*	*	11	4
PAOZZ	5310-045-4007	WASHER, LOCK: SWITCH MTG MS35338-41 (96906)	EA	4	*	*	*	*	11	5
PAOZZ	5325-263-6632	GROMMET: PRESSURE SWITCH ENCLOSURE MS35490-6 (96906)	EA	1	*	*	*	*	11	6
XBOZZ		ENCLOSURE: PRESSURE SWITCH 13214E3578-1 (97403)	EA	1					11	7
MFOFF		LEAD, ELECTRICAL MANUFACTURE FROM: WIRE, ELECTRICAL, AS REQUIRED M5086-1-16-9 (81349) TERMINAL LUG, 2 EA MS35036-153 (96906)	EA	1					11	8
		GROUP 12 - COMPRESSOR ASSEMBLY								
PAOZZ	5310-984-3806	NUT, SELF-LOCKING: COMPRESSOR MTG, 5/16-18 THD SIZE MS51922-9 (96906)	EA	4	*	*	*	*	12	1
PAOZZ	5310-167-0767	WASHER, FLAT: COMPRESSOR MTG AN970-5 (88044)	EA	4	*	*	*	*	12	2
PAOZZ	5935-754-5638	CONNECTOR, ELECTRICAL: COMPRESSOR POWER INPUT MS3102R20-15P (96906)	EA	1	*	*	*	*	12	6
XBOZZ		BUSHING: COMPRESSOR MTG 13214E3659 (97403)	EA	4					12	7
PAOZZ	5310-401-3365	WASHER: COMPRESSOR MTG 13211E8170 (97403)	EA	8	*	*	*	*	12	8
PAOZZ		WASHER: COMPRESSOR MTG 13214E3476 (97403)	EA	4	*	*	*	*	12	9
PAOZZ	5305-235-4727	SCREW, SHOULDER: COMPRESSOR MTG 13211E8166 (97403)	EA	4	*	*	*	*	12	10
		GROUP 13 - ACCESSORY ITEMS								
PAOZZ		CONNECTOR, ELECTRICAL: AIR CONDITIONER POWER INPUT MS3106R20-4SX (96906)	EA	1	*	*	*	*	13	1
PAOZZ	5305-984-6194	SCREW, MACHINE: COVER MTG, NO. 8-32 THD SIZE, 5/8 IN. LG MS35206-246 (96906)	EA	8	*	*	*	*	13	2

(1)	(2)	(3)	(4)	(5)	(6)				(7)		
SMR	FEDERAL STOCK	DESCRIPTION	UNIT OF MEAS	QTY INC	15-DAY ORGANIZATIONAL MAINTENANCE ALW				ILLUS-TRATION		
CODE	NUMBER	REF NUMBER & MFR CODE	USABLE ON CODE	IN UNIT	(a)	(b)	(c)	(d)	(a)	(b)	
					1-5	6-20	21-50	51-100	FIG. NO.	ITEM NO.	
PAOZZ	5310-821-2366	WASHER, FLAT: COVER MTG 13214E3469 (97403)		EA	8	*	*	*	*	13	3
PAOZZ	5305-984-6194	SCREW, MACHINE: COVER MTG, NO. 8-32 THD SIZE, 5/8 IN. LG MS35206-246 (96906)		EA	4	*	*	*	*	13	4
PAOZZ		WASHER ASSEMBLY: COVER MTG R655-71C110 (97450)		EA	4	*	*	*	*	13	5
PAOZZ	5305-993-1849	SCREW, MACHINE: COVER MTG, NO. 10-32 THD SIZE, 3/4 IN. LG MS35207-265 (96906)		EA	4	*	*	*	*	13	6
PAOZZ	5310-821-2366	WASHER, FLAT: COVER MTG 13214E3469 (97403)		EA	4	*	*	*	*	13	7
PAOZZ		FASTENER, TURNBUTTON: COVER MTG, NO. 8-32 THD SIZE XX78326-20 (83058)		EA	2	*	*	*	*	13	8
XBOZZ		COVER, CANVAS 13214E3703 (97403)		EA	1					13	9

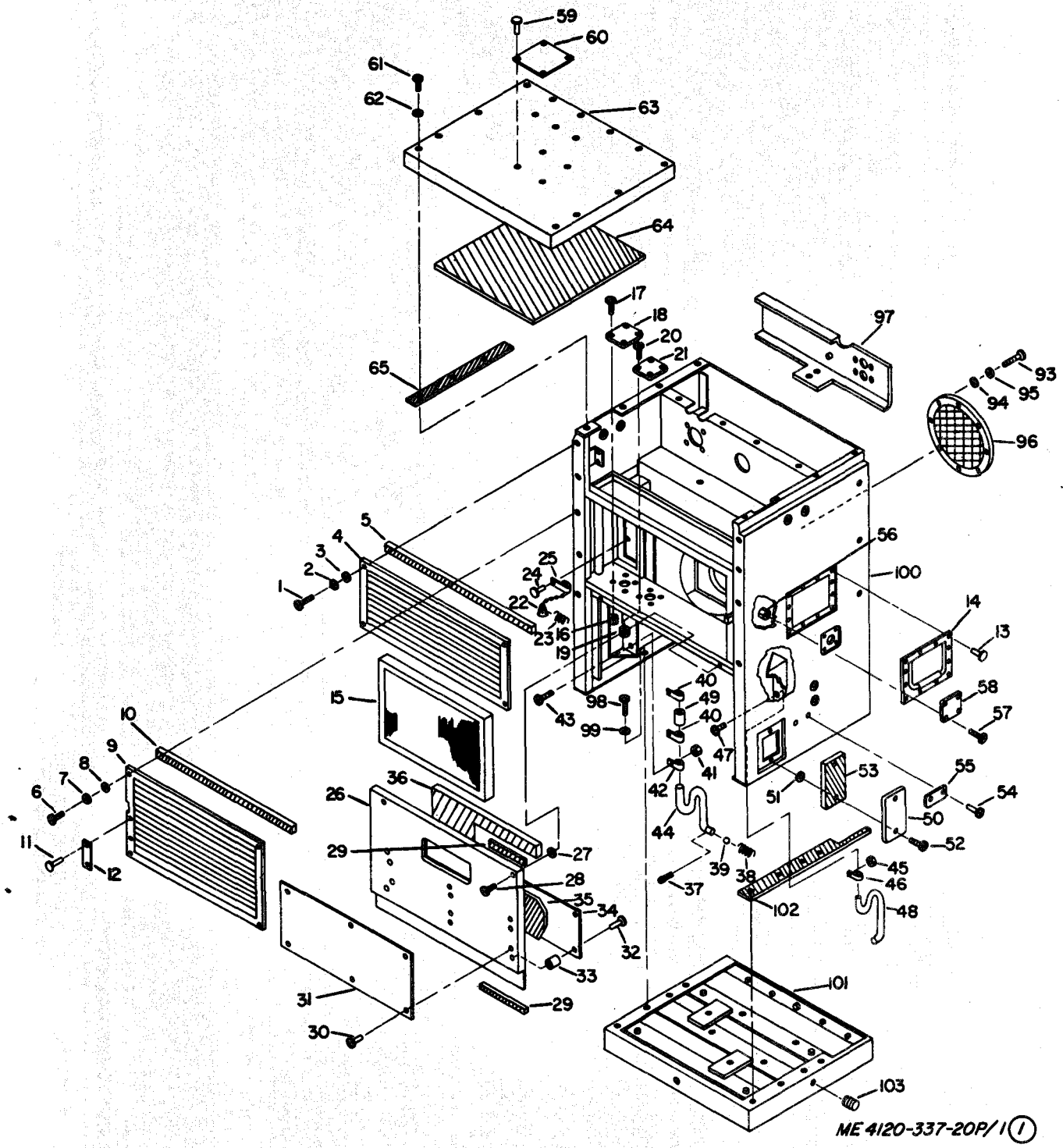
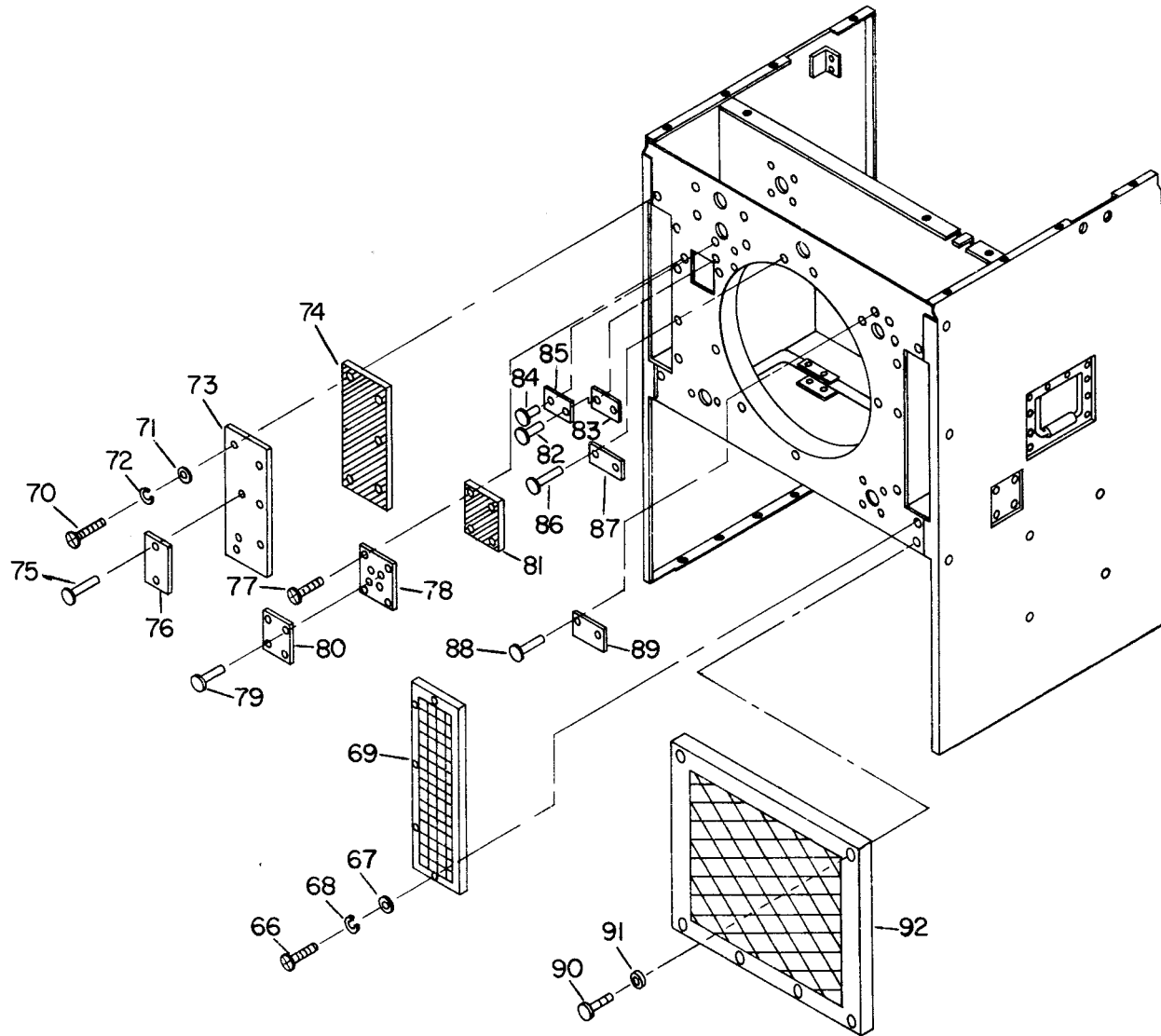


Figure 1. Casing, guards, grilles, drain tubes, panels and filter. (sheet 1 of 2)



ME 4120-337-20P/1 (2)

Figure 1. Casing, guards, grilles, drain tubes, panels and filter. (sheet 2 of 2)

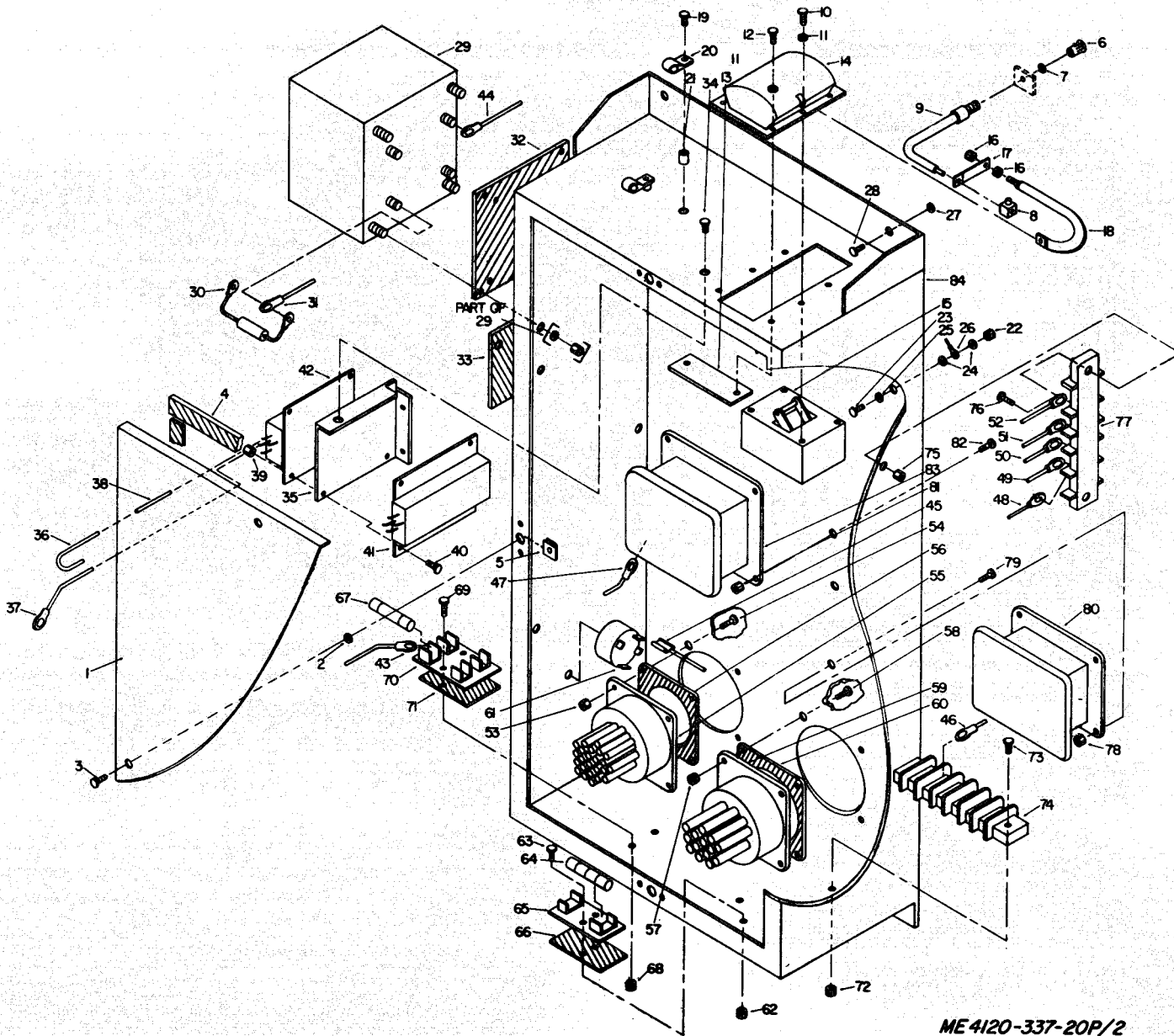
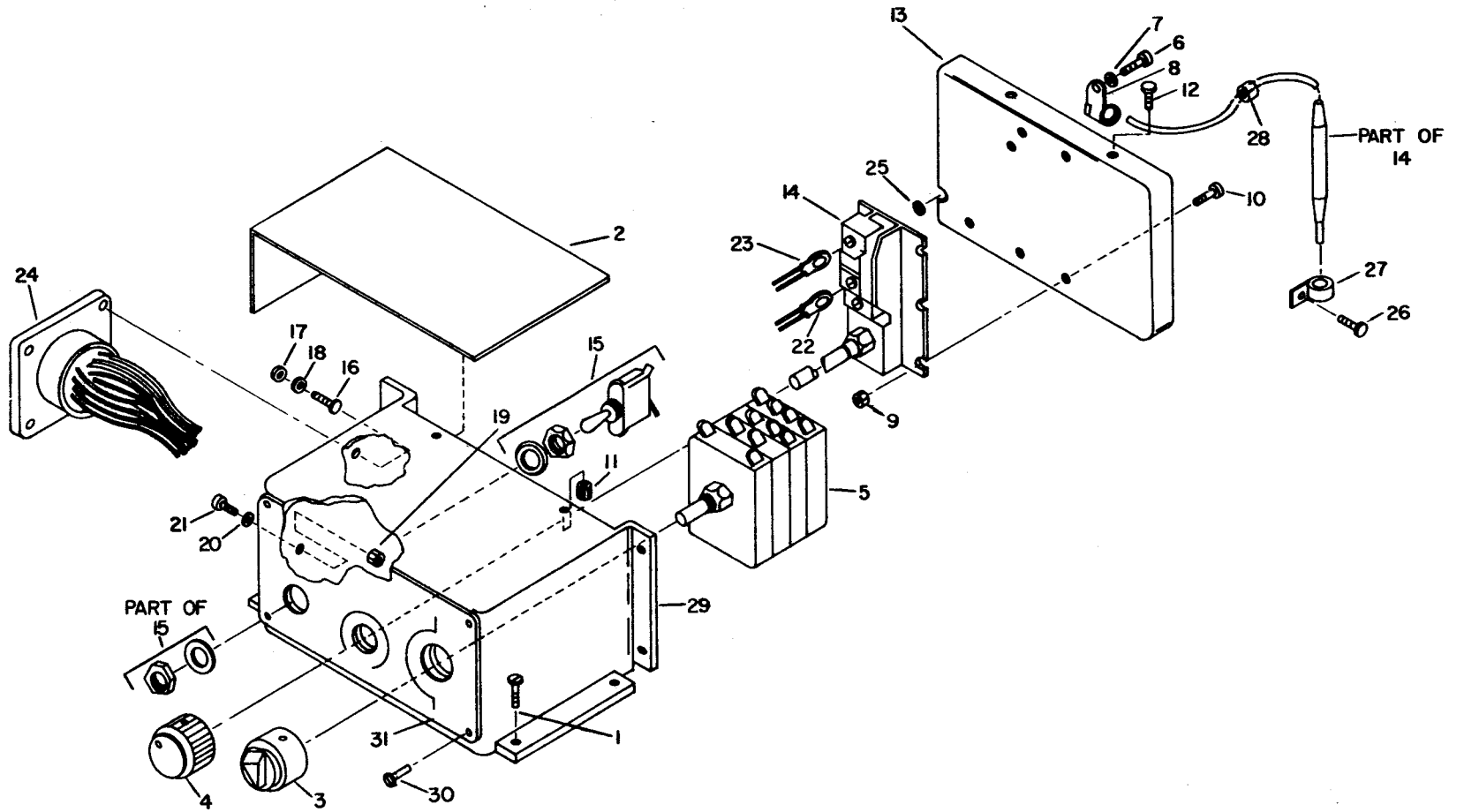
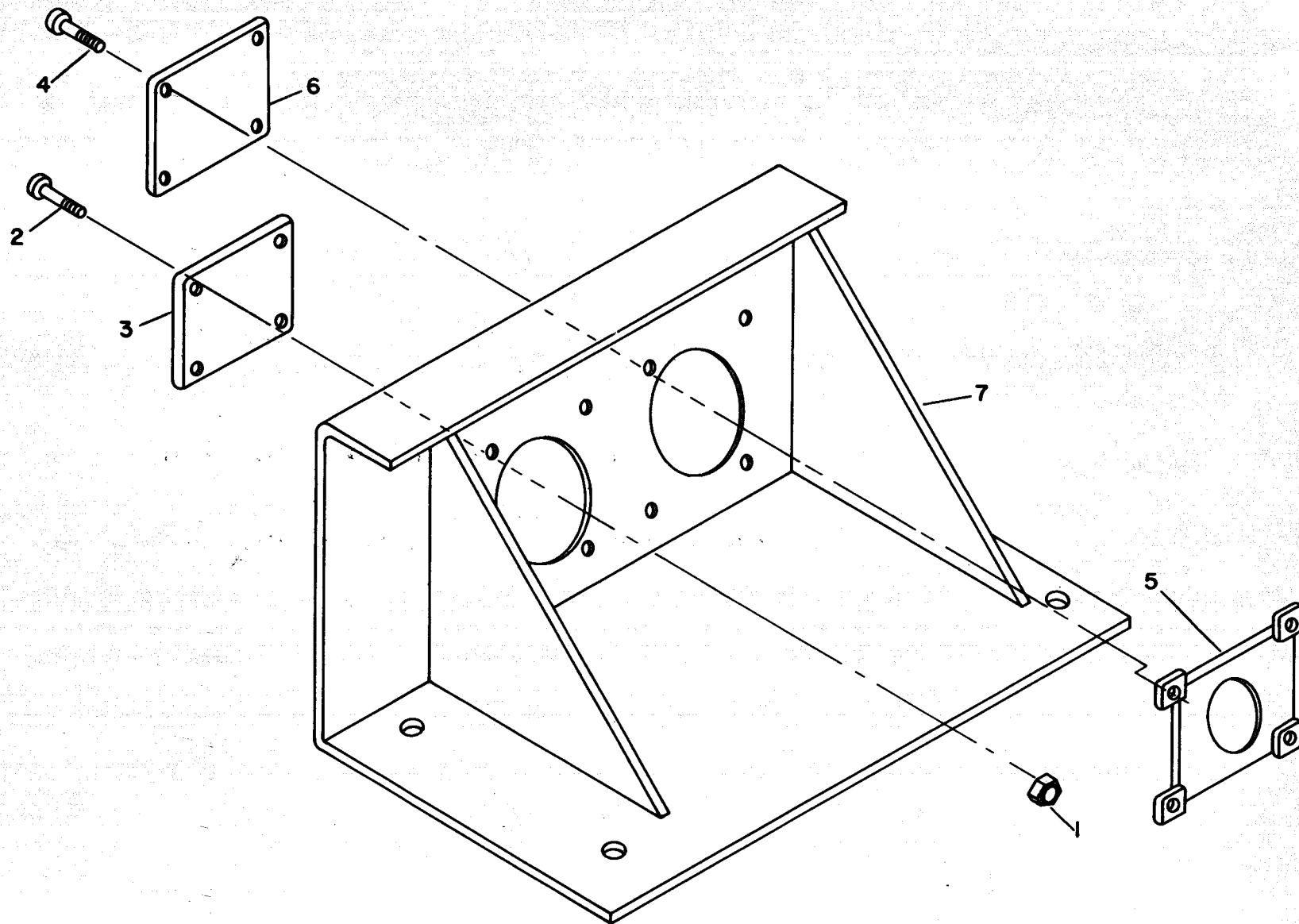


Figure 2. Junction box assembly.



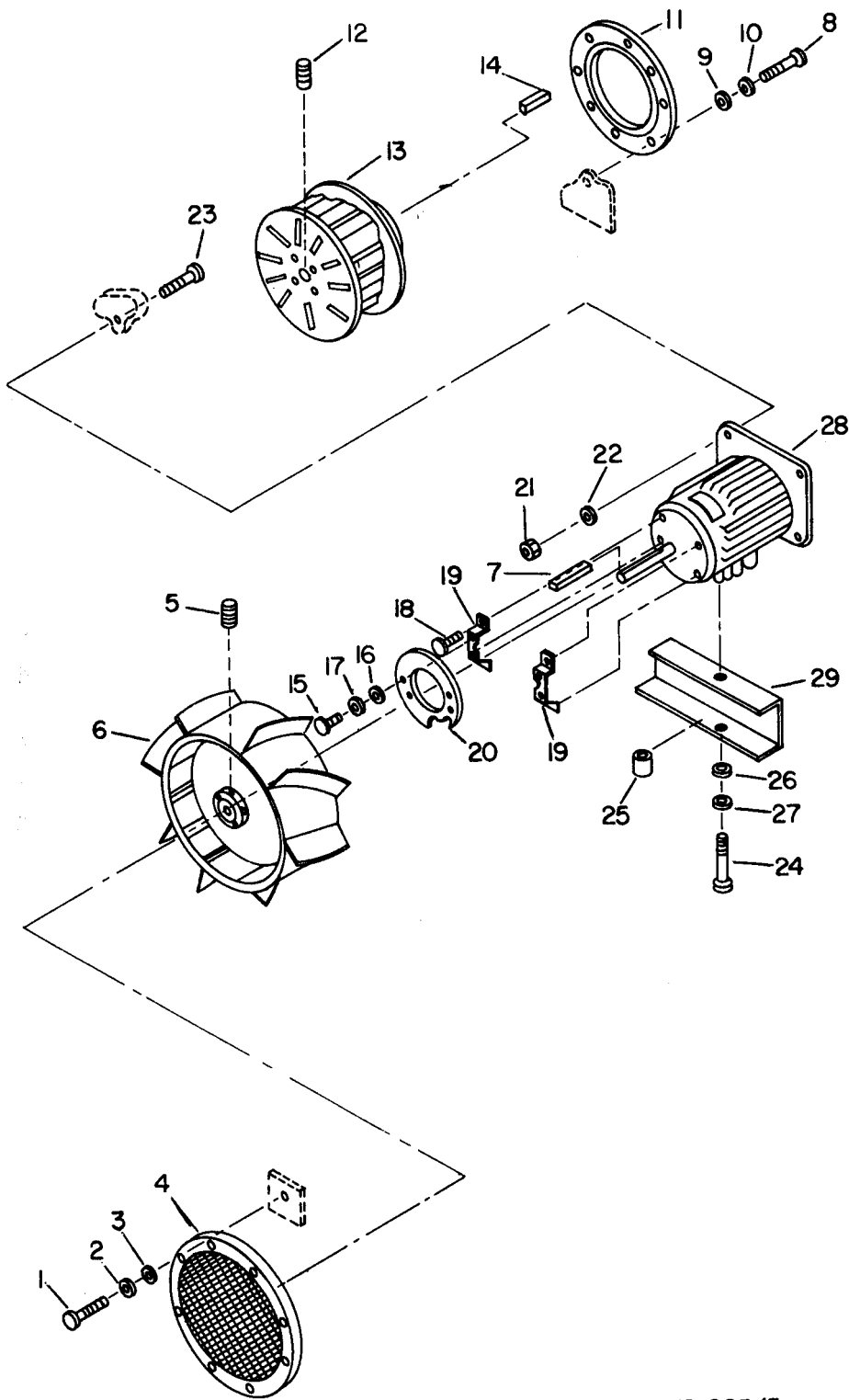
ME 4120-337-20P/3

Figure 3. Control panel assembly.



ME4120-337-20P/4

Figure 4. Block-off panel assembly.



ME4120-337-20P/5

Figure 5. Fan assembly.

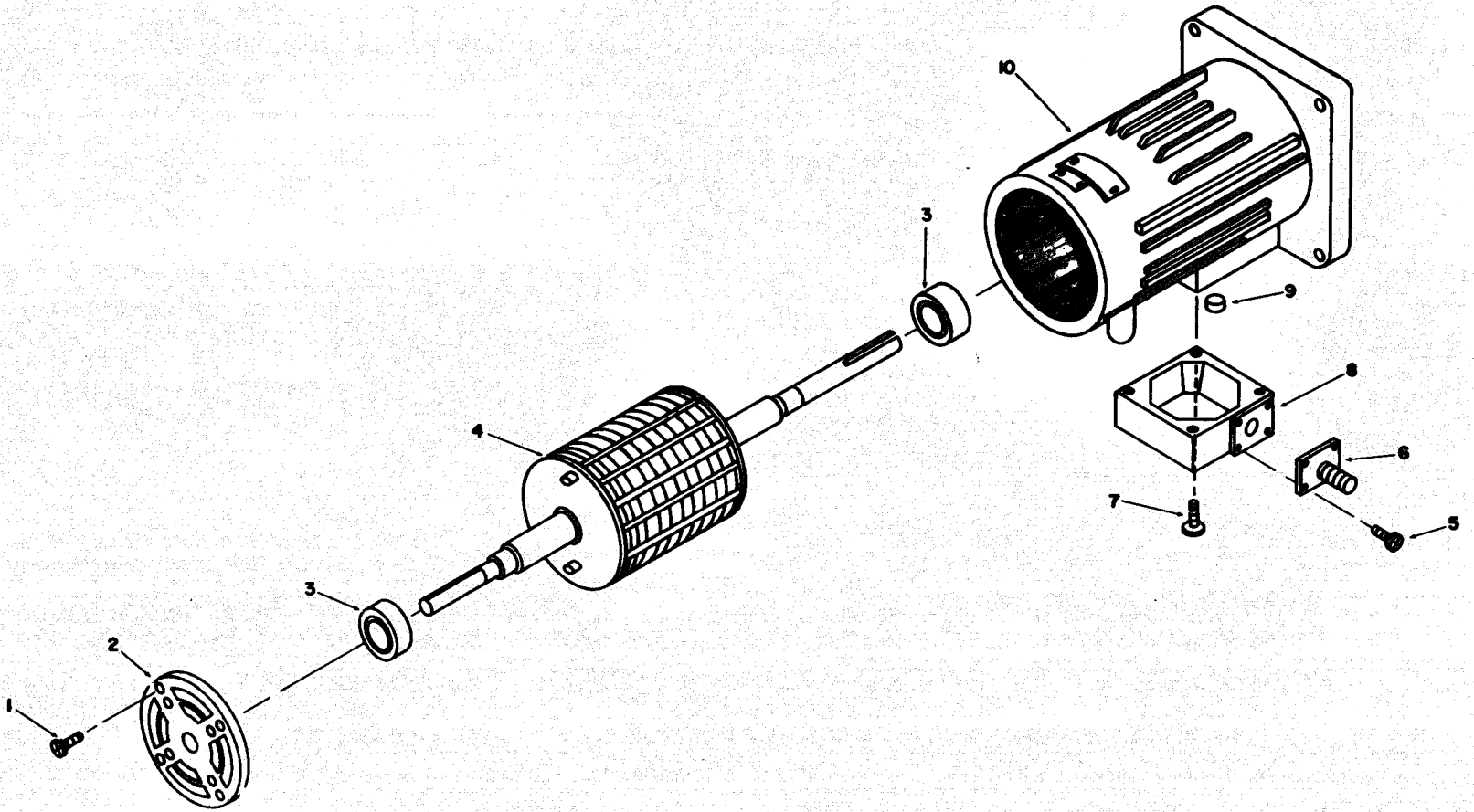
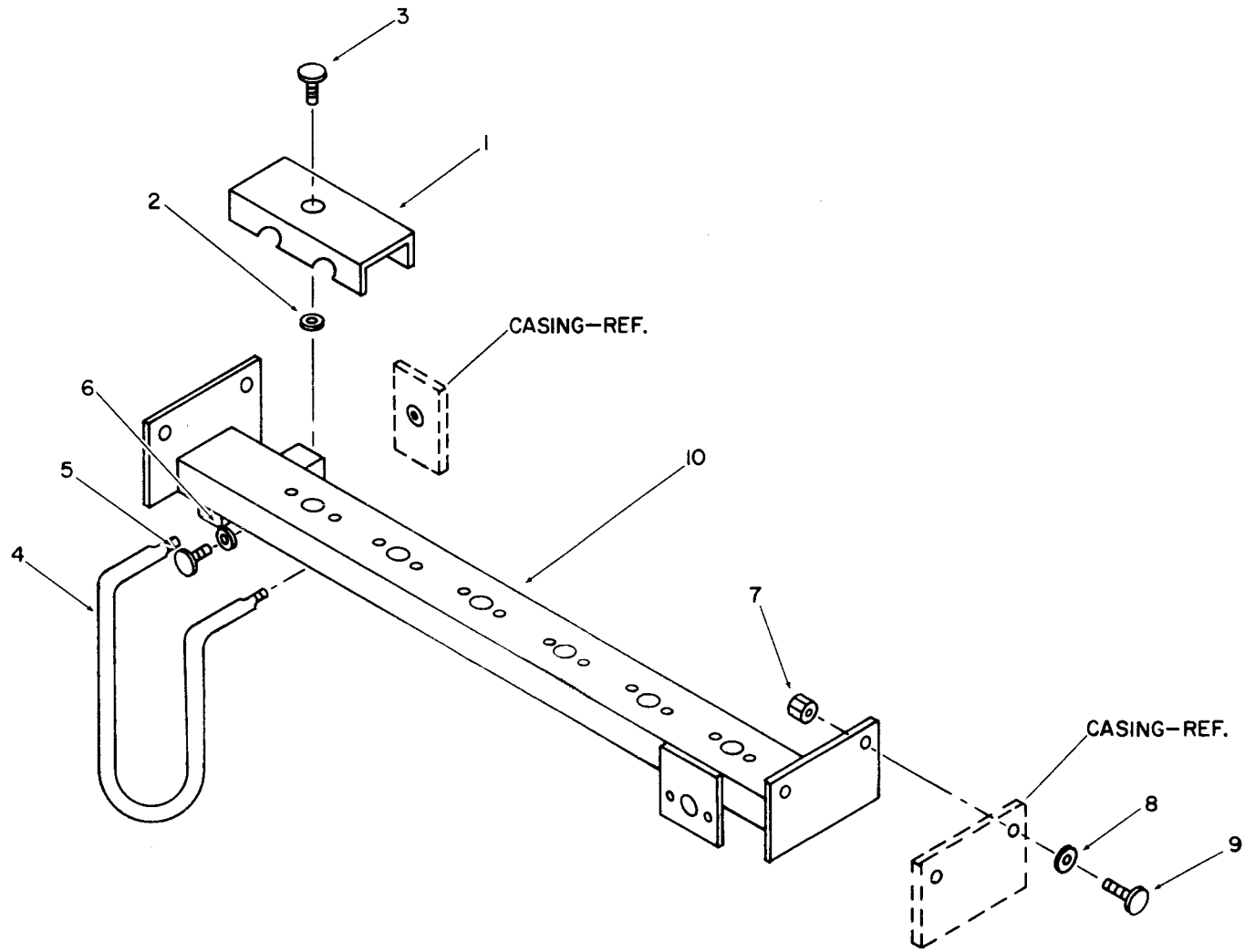


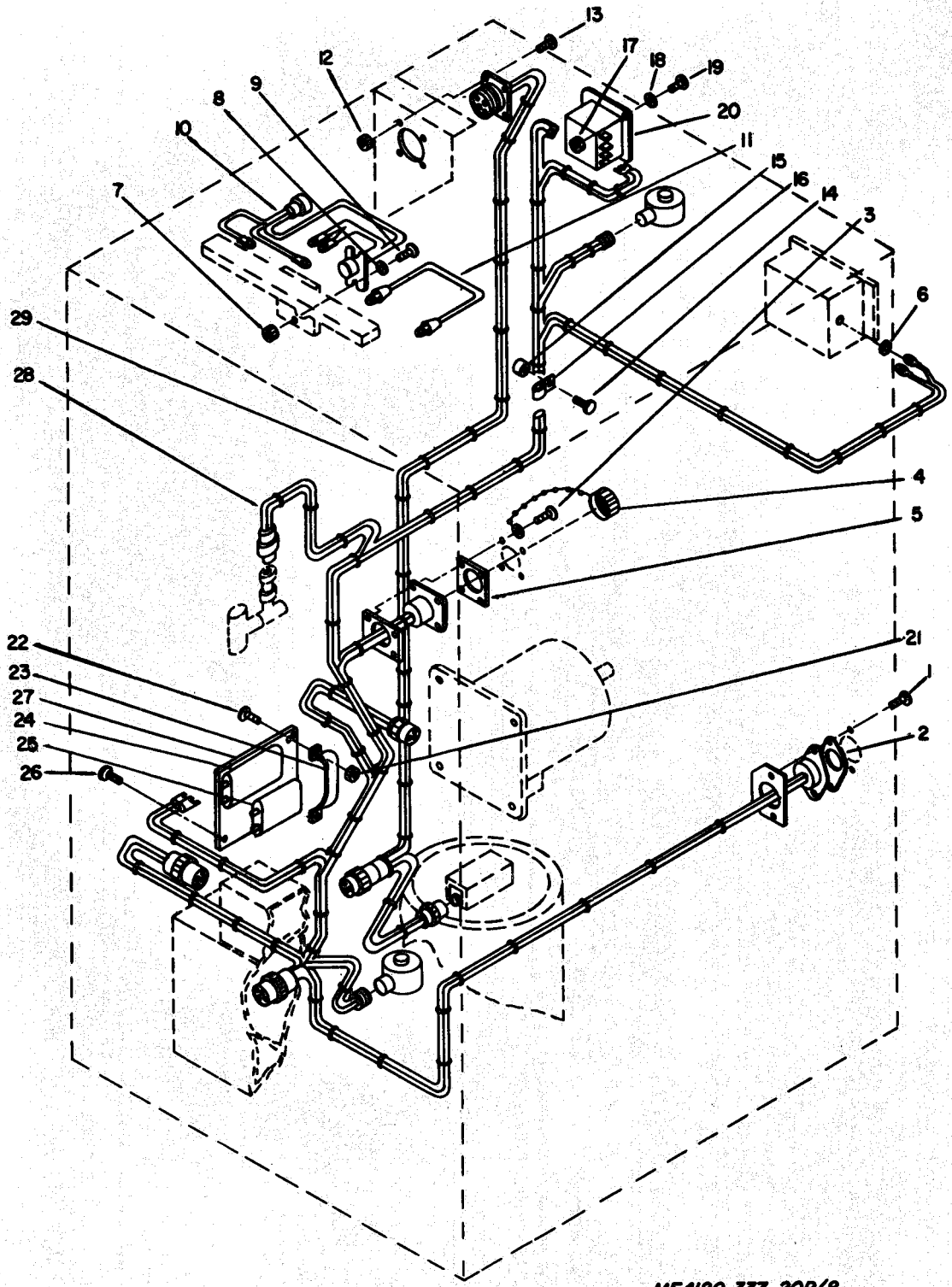
Figure 6. Motor assembly.

ME 4120-337-20P/6



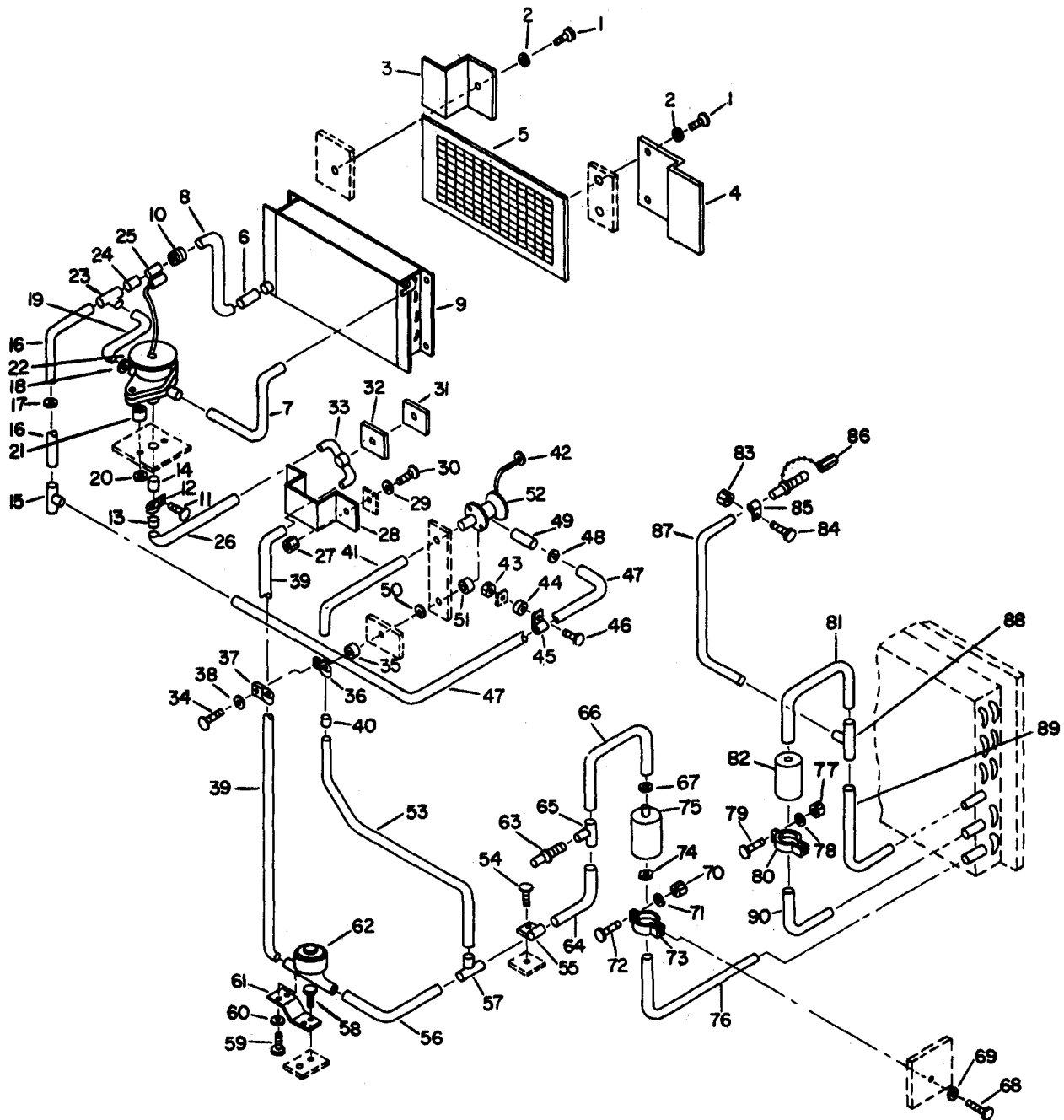
ME4120-337-20P/7

Figure 7. Heater assembly.



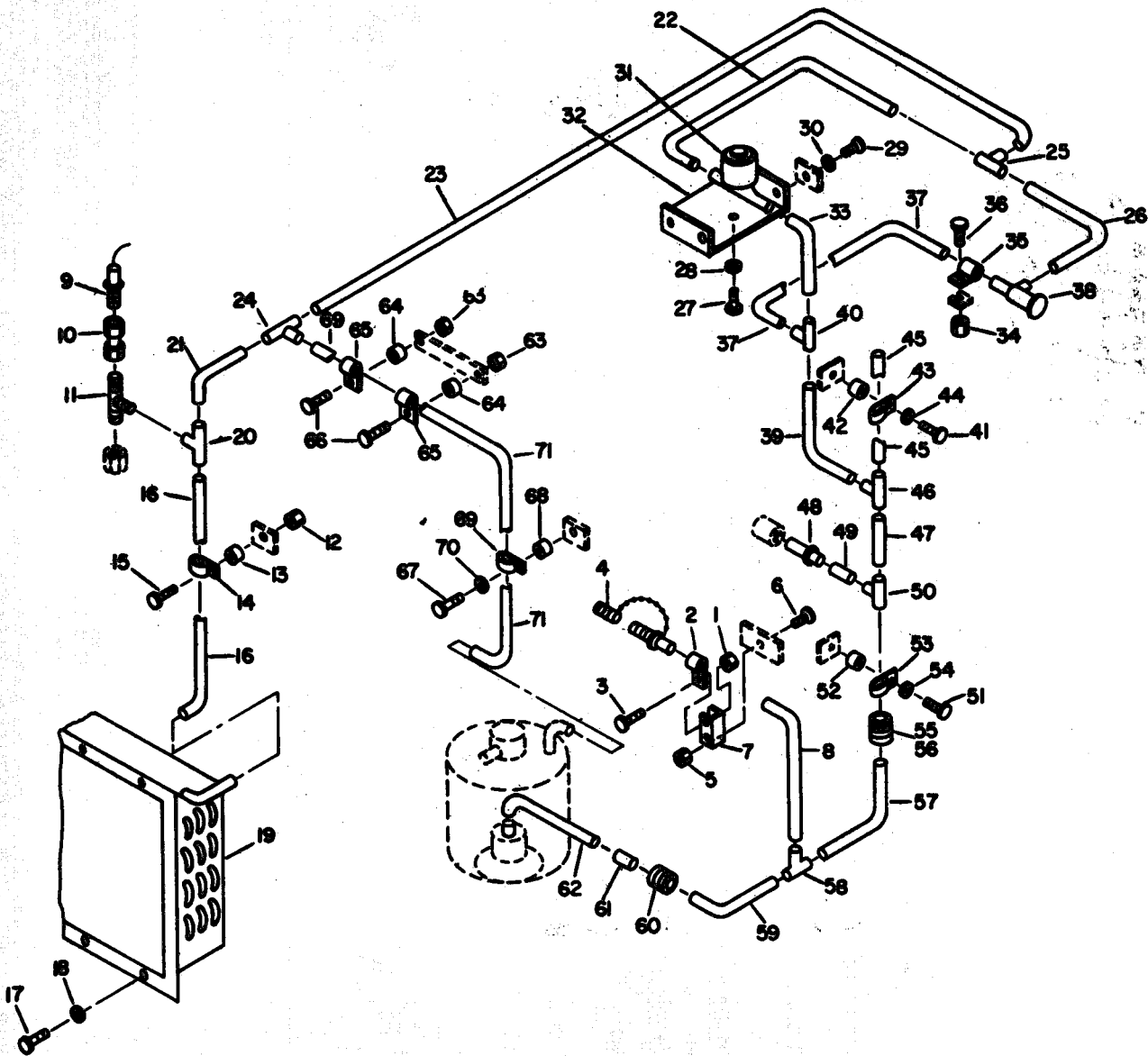
ME4120-337-20P/8

Figure 8. Wiring harnesses and clamps.



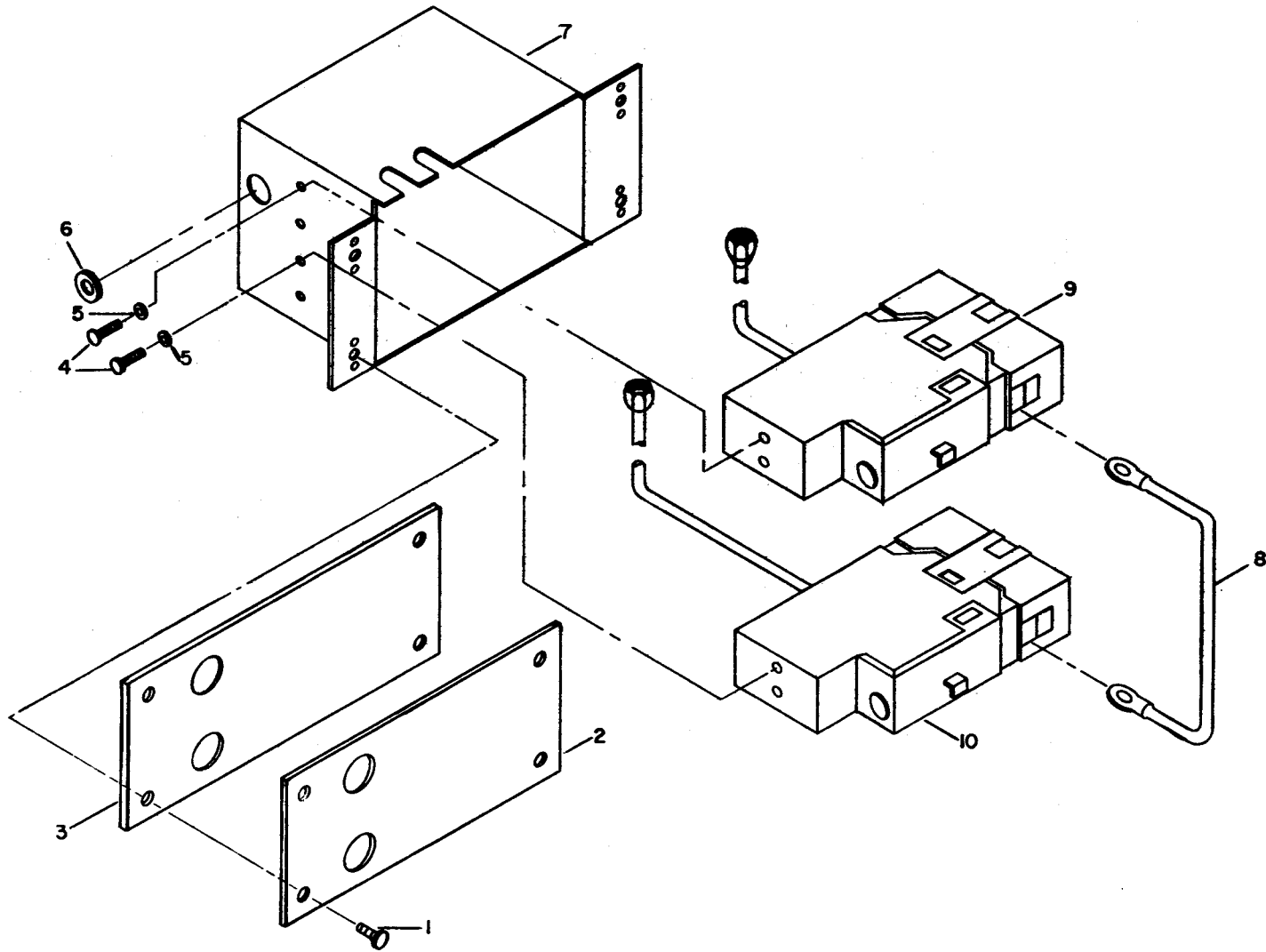
ME 4120-337-20P/9

Figure 9. Mist eliminator, evaporator and condenser coils, valves, dehydrator, receiver, sight glass and piping.



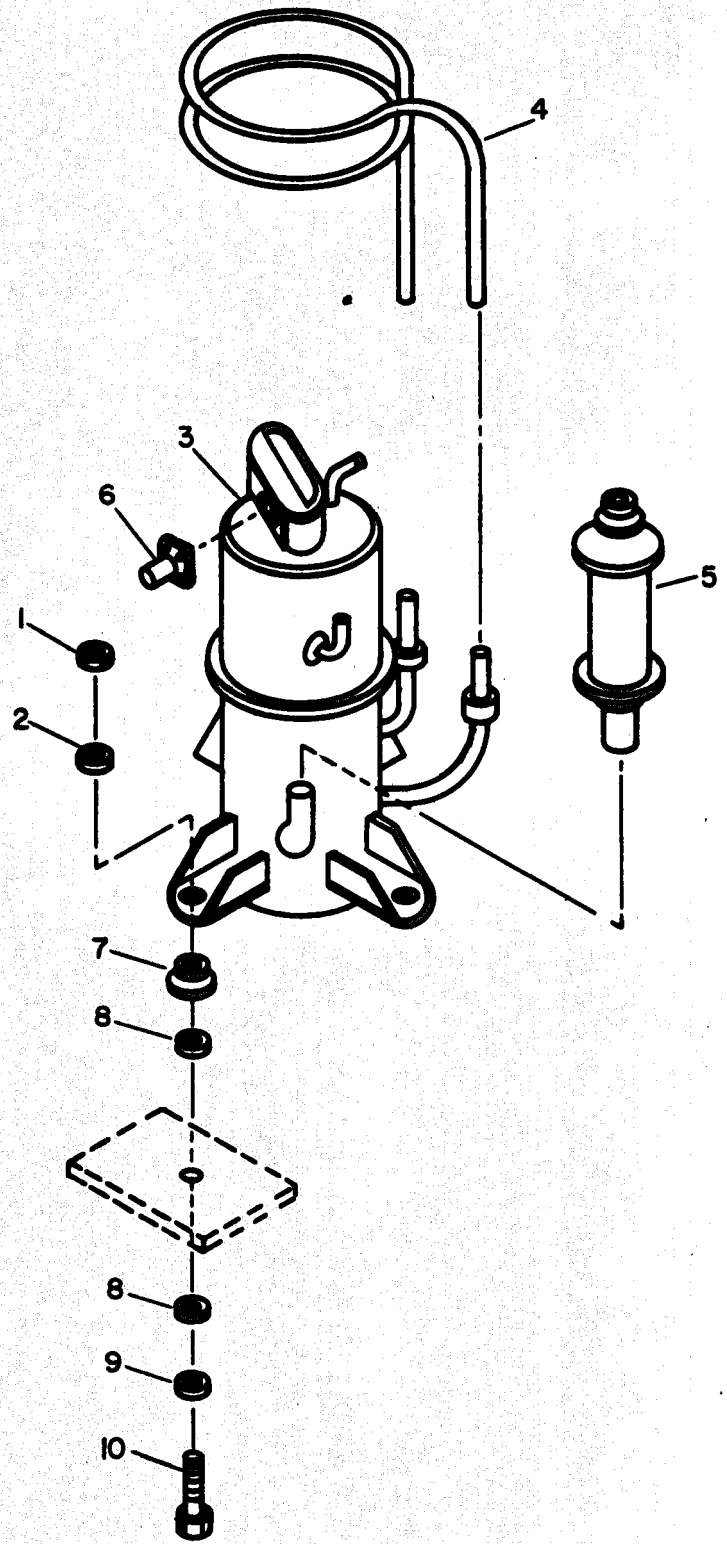
ME4120-337-20P/10

Figure 10. Valves, pressure switches and piping.



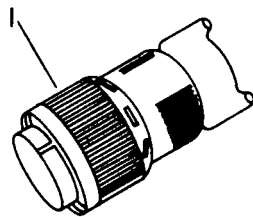
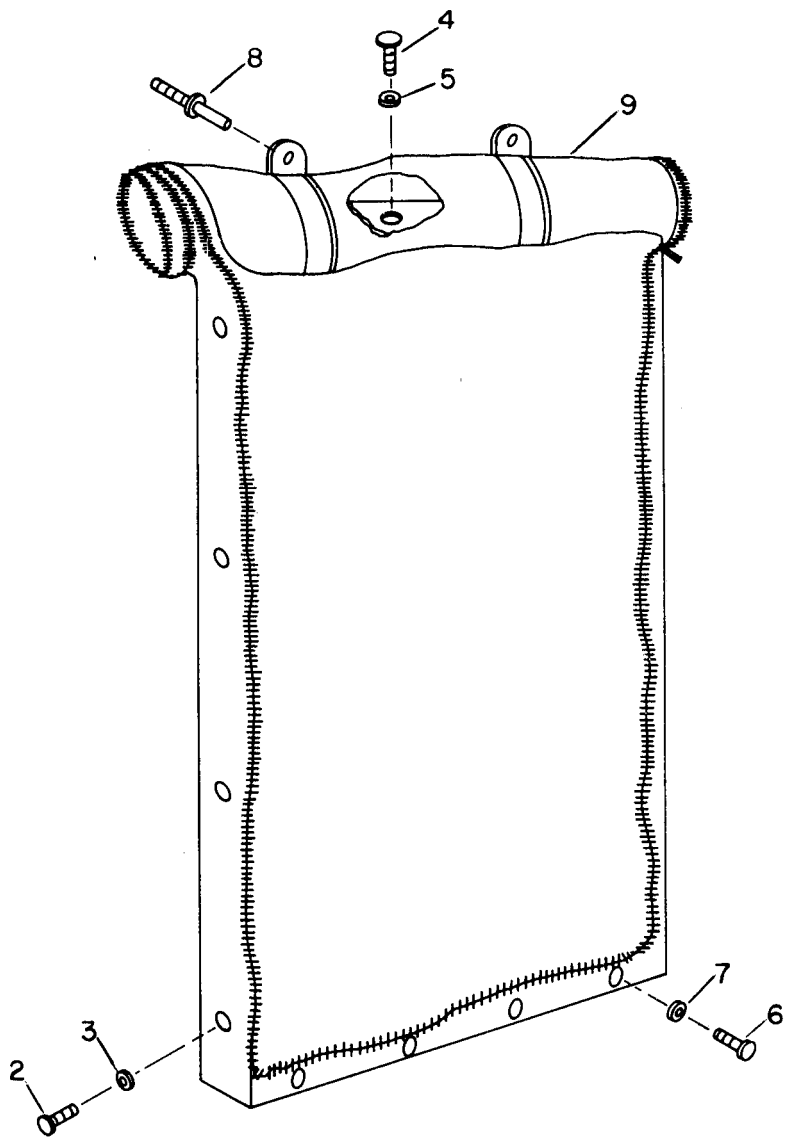
ME 4120-337-20P/11

Figure 11. High and low pressure switches and enclosure.



ME4120-337-20P/12

Figure 12. Compressor assembly.



ME 4120-337-20P/13
Figure 13. Accessory items.

Section IV. INDEX-FEDERAL STOCK NUMBER AND REFERENCE NUMBER
 CROSS-REFERENCE TO FIGURE AND ITEM NUMBER

STOCK NUMBER	FIGURE NO	ITEM NO	STOCK NUMBER	FIGURE NO	ITEM NO
4130-106-1971	6	9	5305-995-3442	10	15
4130-106-5662	2	55		10	66
4130-901-0323	1	15	5305-995-3444	2	23
4540-110-9660	7	4		2	76
4730-189-2739	9	67	5305-995-6311	10	41
	9	74		15	51
4730-908-3194	1	40	5310-014-5850	2	24
5305-053-1114	4	4		3	17
	8	3		3	20
5305-059-4553	2	63	5310-045-3296	2	25
	2	69		3	7
5305-063-3503	1	47		3	18
5305-068-0505	1	98		9	38
5305-088-9044	3	16		10	44
5305-163-8349	7	3		10	54
5305-269-3212	5	23		10	70
5305-235-4727	12	10	5310-045-3299	1	2
5305-621-5305	2	28	5310-087-4652	5	21
5305-857-5867	7	5	5310-088-0551	1	19
	9	1		1	56
5305-889-2999	1	20		8	12
	1	57	5310-167-0767	12	2
5305-889-3001	2	73	5310-275-6813	2	5
	4	2	5310-401-3365	12	8
5305-929-6558	5	5	5310-407-9566	5	27
	5	12	5310-530-9963	1	51
5305-984-4976	8	13	5310-596-7691	2	7
5305-984-4983	2	10	5310-637-9541	9	20
5305-984-4984	11	4		9	50
5305-984-4988	2	12	5310-809-4058	1	99
5305-984-4989	2	40	5310-809-8544	5	9
	10	27		5	16
5305-984-4992	1	17		8	8
	2	54		9	29
	11	1		10	30
5305-984-6193	2	34	5310-809-8546	7	6
	3	10		9	2
	3	12	5310-811-3494	2	57
	9	59		8	21
	10	29		9	27
5305-984-6194	1	43	5310-821-2366	1	3
	1	61	5310-821-2366	1	8
	1	77		1	67
	3	26		1	71
	5	8		1	91
	5	15		1	94
	8	9		5	3
	8	22		10	18
5305-984-6194	8	26		13	3
	9	11		13	7
	9	30	5310-877-5797	2	22
	9	58		2	75
	13	2		2	78
	13	4		2	81
5305-984-6195	1	1		7	7
	1	6		9	43
	1	66		9	83
	1	93		10	1
	2	58		10	5
	5	1		10	12
	8	1		10	34
5305-984-6196	2	19		10	63
5305-984-6197	1	70	5310-880-9344	1	27
5305-984-6222	8	19		2	2
5305-989-7434	3	6		2	27
	9	84		7	2
	10	3	5310-889-2549	3	9
	10	6		3	11
5305-989-7435	2	79	5310-984-3806	12	1
	2	82	5315-234-1856	1	37
	3	21	5315-730-4564	5	14
	7	9	5315-730-4570	5	7
	9	54	5320-874-4471	1	32
	10	36	5320-882-8388	1	13
5305-993-1849	1	90	5320-932-1972	1	24
	10	17		1	30
	13	6		1	54
5305-993-1851	3	1		1	59
	9	46		1	75
5305-995-3441	10	67		1	79
5305-995-3442	8	14		1	82
	9	34		1	84

Section IV. INDEX-FEDERAL STOCK NUMBER AND REFERENCE NUMBER
 CROSS-REFERENCE TO FIGURE AND ITEM NUMBER

STOCK NUMBER	FIG NO	ITEM NO	STOCK NUMBER	FIG NO	ITEM NO
5320-932-1972	1	86			
	1	88			
	3	30			
5325-263-6632	8	6			
	9	48			
	11	6			
5325-286-6047	3	25			
	9	42			
5325-954-3832	1	52			
5330-119-7503	7	8			
5340-020-0383	8	16			
5340-103-2976	3	8			
5340-105-8328	3	27			
	9	12			
	9	37			
5340-105-8328	9	55			
	10	14			
	10	65			
	10	69			
5340-106-0549	9	36			
	9	45			
	9	85			
	10	2			
5340-106-0550	10	43			
	10	53			
5340-106-0551	1	42			
	1	46			
	10	35			
5340-274-6226	2	20			
5355-171-2442	2	6			
5355-579-2896	3	3			
5355-472-9354	3	4			
5920-243-9331	2	64			
5920-939-5442	2	67			
5930-683-1628	3	15			
5930-907-8948	3	5			
5930-923-4176	3	14			
5935-754-5638	12	6			
5935-821-0345	6	6			
5945-007-7668	2	42			
5945-007-7669	2	41			
5945-106-7100	8	20			
5945-549-6348	2	80			
	2	83			
5950-111-4720	2	29			
5961-106-5259	2	61			
6105-103-4514	5	28			
6105-103-4514	6				

Section IV. INDEX-FEDERAL STOCK NUMBER AND REFERENCE NUMBER
 CROSS-REFERENCE TO FIGURE AND ITEM NUMBER

REFERENCE NUMBER	MFR CODE	FIG NO	ITEM NO	REFERENCE NUMBER	MFR CODE	FIG NO	ITEM NO
AD42H	7707	1	24	MS21044N3	96906	10	12
	7707	1	30		96906	10	34
	7707	1	54		96906	10	63
	7707	1	59	MS21045-08	96906	3	9
	7707	1	75		96906	3	11
	7707	1	79	MS21045-3	96906	3	19
	7707	1	82	MS21083N3	96906	2	16
	7707	1	84	MS21104D10	96906	1	42
	7707	1	86		96906	1	46
	7707	1	88	MS21104D3	96906	2	20
	7707	3	30	MS21104D4	96906	9	36
AD43H	7707	1	13		96906	9	45
AD45H	7707	1	32		96906	9	85
AN970-5	88044	12	2		96906	10	2
APGH11R1799-5	81541	2	15	MS21104D6	96906	3	27
ASTMD1056SBE42CF2	81346	1	5		96906	9	12
	81346	1	10		96906	9	37
	81346	1	29	MS21104D6	96906	9	55
	81346	1	53		96906	10	14
	81346	1	65		96906	10	65
	81346	1	74		96906	10	69
	81346	1	81	MS21104D8	96906	10	43
	81346	1	102		96906	10	53
	81346	2	4	MS21104D9	96906	8	16
	81346	2	33	MS21919H6	96906	3	8
A19AGF10	92578	3	14	MS24192D1	96906	2	80
A37693	41625	2	8		96906	2	83
A5052	41947	9	67	MS24523-22	96906	3	15
	41947	9	74	MS24586C48	96906	1	23
B4310-1	41625	2	6	MS24621-11	96906	4	4
B48701X22-00	41625	2	9		96906	8	3
C13853-1420	78553	2	5	MS24665-155	96906	1	37
C6974-20-41	78553	4	5	MS24693S50	96906	1	47
	78553	8	28	MS25036-101	96906	2	30
DB92100	49367	8	28	MS25036-106	96906	2	31
F09A250V2A	81349	2	64		96906	2	44
H561L5-2RG	98003	1	14		96906	2	46
KAW5	71400	2	67		96906	2	55
MILI14511	81349	1	35		96906	2	59
	81349	1	36		96906	3	23
	81349	1	64		96906	3	24
MILI23053-2CL1	81349	2	30	MS25036-108	96906	2	47
	81349	2	38	MS25036-108	96906	2	48
	81349	2	55		96906	2	55
	81349	2	59		96906	2	59
	81349	3	24		96906	3	24
	81349	8	10		96906	8	10
	81349	8	28		96906	8	11
MILP15280FORMT	81349	10	56	MS25036-112	96906	2	26
MILT22085TYPE1	81349	10	55		96906	2	59
MILT43435SIZE3TYPE1FINISHB	81349	3	24	MS25036-153	96906	2	37
	81349	8	28		96906	2	43
	81349	8	29		96906	2	44
MS20066-143	96906	5	14		96906	2	45
MS20066-145	96906	5	7		96906	2	48
MS20426AD4-5-5	96906	1	11		96906	2	49
MS21044D08	96906	1	41		96906	2	51
	96906	1	45		96906	2	52
	96906	8	7		96906	2	55
MS21044N04	96906	1	19		96906	2	59
	96906	1	56		96906	3	22
	96906	8	12		96906	3	23
MS21044N06	96906	1	16		96906	3	24
	96906	2	39		96906	8	28
	96906	2	53		96906	11	8
	96906	2	62	MS25036-156	96906	2	50
	96906	2	68		96906	2	59
	96906	2	72	MS25036-157	96906	2	26
	96906	4	1	MS25043-20D	96906	8	4
	96906	8	17	MS25251-12	96906	8	28
MS21044N08	96906	2	57	MS25251-16	96906	8	28
	96906	8	21		96906	8	29
	96906	9	27	MS25165-1	96906	3	3
MS21044N3	96906	2	22	MS27183-10	96906	1	99
	96906	2	75	MS27183-12	96906	5	26
	96906	2	78	MS27183-14	96906	5	22
	96906	2	81	MS27183-42	96906	2	24
	96906	7	7		96906	3	17
	96906	9	43		96906	3	20
	96906	9	83	MS27183-6	96906	8	18
	96906	10	1	MS27183-7	96906	5	9
	96906	10	5		96906	5	16

Section IV. INDEX-FEDERAL STOCK NUMBER AND REFERENCE NUMBER
 CROSS-REFERENCE TO FIGURE AND ITEM NUMBER

REFERENCE NUMBER	MFR CODE	FIG NO	ITEM NO	REFERENCE NUMBER	MFR CODE	FIG NO	ITEM NO	
MS27183-7	96906	8	8	MS35207-268	96906	9	34	
	96906	9	29		96906	10	15	
	96906	10	30		96906	10	66	
MS27183-8	96906	7	6	MS35207-269	96906	10	67	
	96906	9	2	MS35207-271	96906	10	41	
MS2100R16-10P	96906	8	10		96906	10	51	
MS3100R20-4PX	96906	8	28	MS35207-280	96906	9	68	
MS3100R28-17S	96906	8	28	MS35207-285	96906	9	72	
MS3102R14S6P	96906	6	6	MS35207-287	96906	9	79	
MS3102R20-15P	96906	12	6	MS35333-37	96906	2	11	
MS3102R28-9S	96906	2	55	MS35335-32	96906	2	7	
MS3102R32-7P	96906	2	59	MS35338-41	96906	11	5	
MS3106R14S6S	96906	8	28	MS35338-42	96906	1	2	
MS3106R16-10S	96906	8	29		96906	1	7	
MS3106R20-4SX	96906	13	1		96906	1	68	
MS3106R20-15S	96906	8	29		96906	1	72	
MS3106R28-9P	96906	8	29		96906	1	95	
MS3106R32-7S	96906	8	28		96906	5	2	
MS35190-238	96906	2	63		96906	5	10	
	96906	2	69		96906	5	17	
MS35191-268	96906	5	18		96906	9	60	
MS35206-217	96906	1	20		96906	10	28	
	96906	1	57	MS35338-43	96906	2	25	
MS35206-219	96906	8	13		96906	3	7	
MS35206-226	96906	2	10		96906	3	18	
MS35206-227	96906	11	4		96906	9	38	
MS35206-228	96906	2	12		96906	10	44	
MS35206-229	96906	2	40		96906	10	54	
	96906	10	27		96906	10	70	
MS35206-231	96906	2	73	MS35338-44	96906	9	69	
	96906	4	2		96906	9	71	
MS35206-232	96906	1	17		96906	9	78	
	96906	2	54	MS35338-45	96906	5	27	
	96906	11	1	MS35338-46	96906	9	20	
MS35206-235	96906	8	19		96906	9	50	
MS35206-245	96906	2	34	MS35490-1	96906	3	25	
	96906	3	10		96906	9	42	
MS35206-245	96906	3	12	MS35490-14	96906	9	17	
	96906	9	59	MS35490-6	96906	8	6	
	96906	10	29		96906	9	48	
MS35206-246	96906	1	43		96906	11	6	
	96906	1	61	MS35650-3252	96906	9	70	
	96906	1	77		96906	9	77	
	96906	3	26	MS35842-11	96906	1	40	
	96906	5	8	MS51007-10	96906	2	56	
	96906	5	15	MS51007-12	96906	2	60	
	96906	8	9	MS51007-7	96906	8	5	
	96906	8	22	MS51021-62	96906	5	5	
	96906	8	26		96906	5	12	
	96906	9	11	MS51922-17	96906	5	21	
	96906	9	30	MS51922-9	96906	12	1	
	96906	9	58	MS90725-39	96906	5	24	
	96906	13	2	MS90725-61	96906	5	23	
	96906	13	4	MS90726-5	96906	1	98	
	MS35206-247	96906	1	1	MS9122-03	96906	7	5
		96906	1	6		96906	9	1
		96906	1	66	MS91528-1C4B	96906	3	4
96906		1	93	MTS004	04009	8	20	
96906		2	58	MWAL256	82647	8	10	
96906		5	1	M5086-1-12-9	81349	2	50	
96906		8	1		81349	2	59	
96906		2	19		81349	8	28	
MS35206-248	96906	2	19		81349	8	28	
MS35206-249	96906	1	70	M5086-1-14-9	81349	2	47	
MS35207-260	96906	3	16		81349	2	51	
MS35207-263	96906	3	6		81349	2	52	
	96906	9	84		814349	2	55	
	96906	10	3		81349	8	29	
MS35206-264	96906	10	6	M5086-1-16-9	81349	2	31	
	96906	2	79		81349	2	36	
	96906	2	82		81349	2	37	
	96906	3	21		81349	2	43	
	96906	7	9		81349	2	44	
	96906	9	54		81349	2	45	
	96906	10	36		81349	2	46	
MS35207-265	96906	1	90		81349	2	48	
	96906	10	17		81349	2	49	
	96906	13	6		81349	2	55	
MS35207-266	96906	2	23		81349	2	59	
	96906	2	76		81349	3	22	
MS35207-267	96906	3	1		81349	3	23	
	96906	9	46		81349	3	24	
MS35207-268	96906	8	14		81349	8	10	

Section IV. INDEX-FEDERAL STOCK NUMBER AND REFERENCE NUMBER
 CROSS-REFERENCE TO FIGURE AND ITEM NUMBER

REFERENCE NUMBER	MFR CODE	FIG NO	ITEM NO	REFERENCE NUMBER	MFR CODE	FIG NO	ITEM NO
M5086-1-16-9	81349	8	11		97403	1	94
	81349	8	28		97403	5	3
	81349	8	29		97403	10	18
M5086-1-16-9	81349	11	8		97403	13	3
M5086-2-10-9	81349	2	26		97403	13	7
NAS1523C3F	80205	7	8	13214E3471-1	97403	1	21
0158	93781	8	28		97403	1	58
PT1	87698	9	10		97403	4	6
	87698	10	60	13214E3471-2	97403	1	18
R655-71C105	97450	8	28		97403	4	3
R655-71C110	97450	1	62	13214E3476	97403	12	9
	97450	13	5	13214E3484	97403	1	48
R655-71C117	97450	2	30	13214E3527	97403	8	27
R655-71C118	97450	2	30	13214E3529-2	97403	8	24
R655-71C122-1	97450	9	73	13214E3529-5	97403	8	25
R655-71C122-2	97450	9	80	13214E3531	97403	8	23
R655-71C140-2	97450	9	5	13214E3533	97403	1	92
R655-71C142-2	97405	2	18	13214E3547	97403	5	11
R655-71C143	97450	2	17	13214E3578-1	97403	11	7
R661-71C139	97450	9	3	13214E3592-1	97403	9	61
R661-71C141	97450	9	4	13214E3612	97403	1	96
R661-72C107	97450	10	7		97403	5	4
R661-72C108	97450	1	44	13214E3615	97403	1	73
R661-72C112	97450	1	60	13214E3616	97403	1	69
R661-72D113	97450	5	13	13214E3622	97403	1	97
SS0329	58849	2	61	13214E3623	97403	5	20
W1706	41947	9	49	13214E3625	97403	5	29
XX78326-20	83058	13	8	13214E3627	97403	5	19
006-10245	74193	2	14	13214E3629-1	97403	7	10
01-008773-020	64731	6	9	13214E3659	97403	12	7
02-009089-000	64731	6	8	13214E3662	97403	1	80
02-009264-003	64731	6	7	13214E3665	97403	4	
02-009264-004	64731	6	5	13214E3685-2	97403	2	32
02-009264-005	64731	6	1	13214E3689	97403	4	7
1000	75543	3	28	13214E3694	97403	5	6
12S1-14-1AA	71286	1	52	13214E3698-1	97403	7	4
12-11014-12	94222	1	27	13214E3703	97403	13	9
	94222	2	2	13214E3704-1	97403	1	4
	94222	2	27	13214E3706-1	97403	1	9
	94222	7	2	13214E3723	97403	8	29
12-11-203-11	94222	2	28	13214E3724	97403	2	55
12-11-303-11	94222	2	3	13214E3726	97403	2	71
12-11-613-11	94222	7	3	13214E3728-8	97403	6	
12-11-713-11	94222	1	28	13214E3762	97403	3	2
13211E8166	97403	12	10	13214E3814	97403	2	66
13211E8170	97403	12	8	13215E9828	97403	2	13
13211E8178	97403	1	103	13216E6182-2	97403	2	42
13211E8215	97403	1	89	13216E6182-3	97403	2	41
13211E8242	97403	9	32	13216E6191-2	97403	2	31
13211E8255	97403	9	31		97403	2	45
13211E8273	97403	8	2		97403	2	47
13211E8288	97403	3	22	13216E6191-2	97403	2	51
	97403	3	24		97403	8	29
13211E8305	97403	1	22	13216E6191-3	97403	2	50
13211E8322	97403	1	25	13216E6192	97403	2	43
13211E8323	97403	1	49		97403	2	59
13211E8376-1	97403	8	15	13216E9515	97403	8	28
	97403	9	35	13216E9519-1	97403	11	3
	97403	9	44	13216E9520-1	97403	11	2
	97403	10	13	13217E2344	97403	1	12
	97403	10	64	13217E5636	97403	5	25
13211E8376-2	97403	10	42	13217E6814	97403	1	76
	97403	10	52	13218E7074	97403	1	83
13211E8376-3	97403	9	21	13218E7075	97403	1	85
	97403	9	51	13218E7076	97403	1	50
13211E8376-5	97403	2	21	13218E7077	97403	1	55
13211E8399C28-17P	97403	3	24	1321E7078	97403	1	87
13211E8411	97403	1	39	13218E7079-2	97403	1	31
13211E8412	97403	1	38	13218E7489	97403	1	78
13214E3372-2	97403	10	68	13218E9884	97403	1	34
13214E3377	97403	10	32	13218E9887-2	97403	2	
13214E3384	97403	1	63	13218E9894	97403	8	28
13214E3412	97403	2	1	13218E9896	97403	2	59
13214E3416	97403	7	1	13218E9897	97403	2	35
13214E3419	97403	9	28	13218E9908-3	97403	3	
13214E3457-1	97403	8	10	13218E9909	97403	3	29
13214E3462	97403	3	24	13218E9911	97403	3	13
13214E3469	97403	1	3	13218E9912	97403	3	31
	97403	1	8	13218E9913	97403	2	84
	97403	1	67	13218E9949-2	97403	1	26
	97403	1	71	2819	71400	2	70
13214E3469	97403	1	91	39TB8	75382	2	77

Section IV. INDEX-FEDERAL STOCK NUMBER AND REFERENCE NUMBER
CROSS-REFERENCE TO FIGURE AND ITEM NUMBER

REFERENCE NUMBER	MFR CODE	FIG NO	ITEM NO
41100	73386	2	29
416-25	93410	8	28
4515	71400	2	65
4730-18	64731	5	28
5S3-1	71286	1	51
6PS306N405N285L	82647	8	28
699JJ6F	75382	2	74
8912K216	15605	3	5
909018	82866	1	15

By Order of the Secretary of the Army:

Official:

VERNE L. BOWERS,
Major General, United States Army
The Adjutant General.

FREDERICK C. WEYAND
General, United States Army
Chief of Staff.

Distribution:

To be distributed in accordance with DA Form 12-25C, (qty rqr block no. 534) Organizational maintenance requirements for Environmental Equipment Air Conditioners 9,000 BTU.

RECOMMENDED CHANGES TO EQUIPMENT TECHNICAL PUBLICATIONS



THEN...JOT DOWN THE DOPE ABOUT IT ON THIS FORM. CAREFULLY TEAR IT OUT, FOLD IT AND DROP IT IN THE MAIL.

SOMETHING WRONG WITH PUBLICATION

FROM: (PRINT YOUR UNIT'S COMPLETE ADDRESS)

DATE SENT

PUBLICATION NUMBER

PUBLICATION DATE

PUBLICATION TITLE

BE EXACT PIN-POINT WHERE IT IS

PAGE NO.

PARA-GRAPH

FIGURE NO.

TABLE NO.

IN THIS SPACE, TELL WHAT IS WRONG AND WHAT SHOULD BE DONE ABOUT IT.

TEAR ALONG PERFORATED LINE

PRINTED NAME, GRADE OR TITLE AND TELEPHONE NUMBER

SIGN HERE

The Metric System and Equivalents

Linear Measure

1 centimeter = 10 millimeters = .39 inch
 1 decimeter = 10 centimeters = 3.94 inches
 1 meter = 10 decimeters = 39.37 inches
 1 dekameter = 10 meters = 32.8 feet
 1 hectometer = 10 dekameters = 328.08 feet
 1 kilometer = 10 hectometers = 3,280.8 feet

Weights

1 centigram = 10 milligrams = .15 grain
 1 decigram = 10 centigrams = 1.54 grains
 1 gram = 10 decigrams = .035 ounce
 1 dekagram = 10 grams = .35 ounce
 1 hectogram = 10 dekagrams = 3.52 ounces
 1 kilogram = 10 hectograms = 2.2 pounds
 1 quintal = 100 kilograms = 220.46 pounds
 1 metric ton = 10 quintals = 1.1 short tons

Liquid Measure

1 centiliter = 10 milliliters = .34 fl. ounce
 1 deciliter = 10 centiliters = 3.38 fl. ounces
 1 liter = 10 deciliters = 33.81 fl. ounces
 1 dekaliter = 10 liters = 2.64 gallons
 1 hectoliter = 10 dekaliters = 26.42 gallons
 1 kiloliter = 10 hectoliters = 264.18 gallons

Square Measure

1 sq. centimeter = 100 sq. millimeters = .155 sq. inch
 1 sq. decimeter = 100 sq. centimeters = 15.5 sq. inches
 1 sq. meter (centare) = 100 sq. decimeters = 10.76 sq. feet
 1 sq. dekameter (are) = 100 sq. meters = 1,076.4 sq. feet
 1 sq. hectometer (hectare) = 100 sq. dekameters = 2.47 acres
 1 sq. kilometer = 100 sq. hectometers = .386 sq. mile

Cubic Measure

1 cu. centimeter = 1000 cu. millimeters = .06 cu. inch
 1 cu. decimeter = 1000 cu. centimeters = 61.02 cu. inches
 1 cu. meter = 1000 cu. decimeters = 35.31 cu. feet

Approximate Conversion Factors

To change	To	Multiply by	To change	To	Multiply by
inches	centimeters	2.540	ounce-inches	newton-meters	.007062
feet	meters	.305	centimeters	inches	.394
yards	meters	.914	meters	feet	3.280
miles	kilometers	1.609	meters	yards	1.094
square inches	square centimeters	6.451	kilometers	miles	.621
square feet	square meters	.093	square centimeters	square inches	.155
square yards	square meters	.836	square meters	square feet	10.764
square miles	square kilometers	2.590	square meters	square yards	1.196
acres	square hectometers	.405	square kilometers	square miles	.386
cubic feet	cubic meters	.028	square hectometers	acres	2.471
cubic yards	cubic meters	.765	cubic meters	cubic feet	35.315
fluid ounces	milliliters	29.573	cubic meters	cubic yards	1.308
pints	liters	.473	milliliters	fluid ounces	.034
quarts	liters	.946	liters	pints	2.113
gallons	liters	3.785	liters	quarts	1.057
ounces	grams	28.349	liters	gallons	.264
pounds	kilograms	.454	grams	ounces	.035
short tons	metric tons	.907	kilograms	pounds	2.205
pound-feet	newton-meters	1.356	metric tons	short tons	1.102
pound-inches	newton-meters	.11296			

Temperature (Exact)

°F	Fahrenheit	5/9 (after	Celsius	°C
	temperature	subtracting 32)	temperature	

PIN: 005802-000